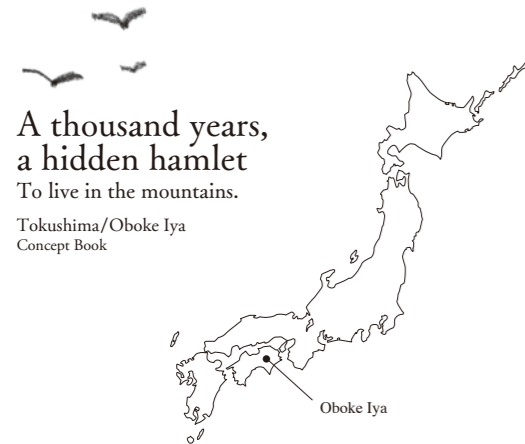


Not yet.

Let's continue in  
"sora no sato"

A thousand years, a hidden hamlet



Nishiawa~Mt.Tsurugi/  
The Yoshino River Tourism Zone  
<http://nishi-awa.jp>

Contacts

●General Incorporated Association "Sora no sato"  
1810-18 Sarada, Ikeda-cho, Miyoshi-shi Tokushima 778-0003  
Tel:0883-76-0713 Fax:0883-72-0753  
E-mail:sora-01@cn05.awaikeda.net

●Miyoshi-City Tourist Information Center  
1810-18 Sarada, Ikeda-cho, Miyoshi-shi Tokushima 778-0003  
Tel:0883-76-0877 Fax:0883-76-0876  
E-mail:info@miyoshicity-kankokyokai.or.jp

Miyoshi City Tourist site

Oboke Iya Navi

<http://miyoshi-tourism.jp/>



Convenient Multi-language voice support to  
the tourism tour of Oboke-Iya

**Miyoshi tourist guide app**

Installation QR code ▶

※iPhone ios7 and below, Android  
only supports 4.1 or later  
※Please install with Wi-Fi for large  
size data

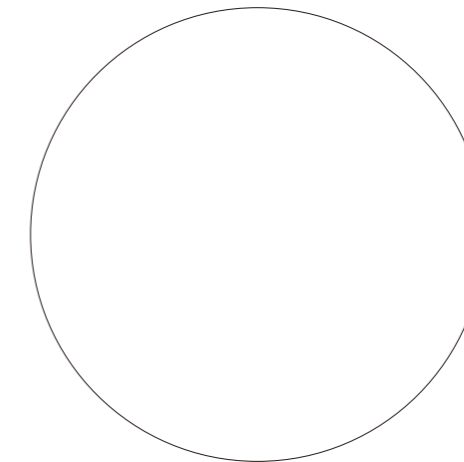
※Corresponding to 5 languages  
(Japanese, English, Simplified Chinese,  
Chinese Hong Kong, French)



[\[Google Play\]](#)  
Android version



[\[App Store\]](#)  
ios version



Shikoku, Oboke Iya

“Not yet”

I had thought that,  
The life and the attraction of mountains would not be understood.  
That’s why I say “Not yet”  
while crouching down with eyes covered.

But

People have noticed the importance of reflection  
since the beginning of the 21st century.  
Pursuing convenience  
makes us feel empty.  
Having left something behind  
during our busy days.

So

“I’m ready”  
Now I will tell you exactly  
about the wisdom that has survived one thousand years  
and has been protected by mountain life.

Treasure hunting of your mind is now starting  
in “Oboke Iya” , an intermontane area, in Tokushima prefecture.



To live in the mountains.



# Contents



04 Venture into the mountains,  
A scene of hide and seek.



06 A poem of flowers and trees.  
07 A Picturesque valley.

## An isolated island in the forest



08 Thatched houses and a village with stone walls  
12 A village that continues to protect folk art.  
14 A legendary village,  
15 Another Tale of the Heike,

## Local specialty of the mountains



16 A story of milling songs of Iya  
18 A tale of tea in the air

## To live with the river

20 The green Yoshino River  
22 The dream of vine bridge



## Hospitality of the mountains

24 A night in mountain life  
28 Oboke-Iya local map & Accommodations



# Venture into the mountains,

There are two purposes to going into the mountains: “Challenging the mind” and “Escaping the mind”

“Going into” means making your way and moving forward. “Challenging the mind” to go into the steep mountains and make a new way there.

“Escaping mind” to go into the deep mountains and hide yourself there.

To find the new you, aim for the mountains sometimes by “Challenging mind”. Only it is tough though, to be held by the mountains with an “Escaping mind”.

The Mountains are thrilling.  
The Mountains are peaceful.

Oboke Iya is a place where you can challenge yourself, escape, and discover Tokushima’s cultural treasures.



## Discovery of dear old things

Going toward Kochi prefecture on Route 32 from Ikeda-cho, Miyoshi-shi, Tokushima prefecture, you will see the mountains on both sides approaching with the Yoshino River in the middle. This is the main entrance of “Oboke-Kobo” which is known as an unexplored region. “Boke”, which literally means walk and danger in Japanese, where a steep cliff with a foot path continues. And “Iya” which connects to “I” that means “the beginning of everything” in Japanese. There are nostalgia, a sense of danger and the mountain scenery here.

A scene of hide and seek.

# A poem of flowers and trees.

A mountain is always like a poet.



The mountains in the early spring are like a little girl who is about to awake from her sleep. The color revives little by little in the mountains like the redness on her cheek. A little climbing makes you feel the change of temperature of the mountain. You can see the movement of the cherry-blossom front from the hamlet to the peaks and the surface of the mountains that the scarlet maple leaves front is descending.



"Cypripedium japonicum" is a visionary flower. It is an endangered precious plant that rarely seen nowadays. You can see a gregariousness of 10 thousands of Cypripedium japonicum at "vine bridge botanical gardens". In May, all of them open toward the same direction and you feel as if fairies are staring at you.



"A flowing river" in the valley. Even the people who see it every day say it is never the same and they say it's a "once-in-a-lifetime encounter". Just seeing the current of the river puts your mind at ease.



A holiday in "Oboke-Koboke" touched with nature's beauty. The brushwork by nature slightly varies as the surface of the mountains and water change its appearance every season. Going down the Yoshino River, you will be captivated by the beauty of its transparent surface from the late autumn to winter.

## A Picturesque Valley. Nature is surely a magician of the beauty



"Hinoji gorge", looks like the hiragana character "ひ(hi)", where a ridge is located in the middle of Iya valley. This is an example of a scenic beauty accepted by the world.



**An isolated island in the forest**

# Thatched houses and a village with stone walls

**A pathway in the mountain that forerunner passed through new soil a long time ago where mountainous samurai and woodworkers were going and coming and dramas of people who created Japanese history are lying.**

## Pathways on the mountaintop

“Ochiai community” became well known after it was designated as a National Important Preservation District for Groups of Historic Buildings in 2005. It is common in this area to see houses located just on the side of serpentine pathways on the mountain. In old days, most mountain pathways were located along the ridge of the mountains, because it was an ideal way to avoid danger compared with the steep side of the valley and the steep rock surface. Also it was good for living and cultivating crops because the upper side of the mountain gets a lot of sunshine. It is natural that the community spread along the pathways as people descended to a community to do things and went up after finishing. These are the path-

ways in the mountains that so many ancestors followed. This might be the reason why a person who visits “Ochiai Community” for the first time might feel nostalgic. Coming here, you can still see the unspoiled landscape of the pathways and the community.

## A Village in a Sea of Clouds

“Ochiai”, which means “coming together” in Japanese, is called this because this is the place where the Iya River and the Ochiai River meet. It’s very foggy by the river, so a sea of clouds can be often seen. The fog floats above the place where the Sansho Shrine is located. Its forest is very unique because warm-climate trees and cool-climate trees grow there naturally. It is designated as a natural treasure of Tokushima



Prefecture. The spring festival (March 5 in lunar calendar), the summer festival (June 8 in lunar calendar) The autumn festival (August 5) is held at the



Sansho Shrine, and floats and a portable shrine are brought out. Children who have their face covered with powder and drawn mustaches put on gorgeous kimonos and beat Japanese drums, which is called “Yataiko”.



## The community unites

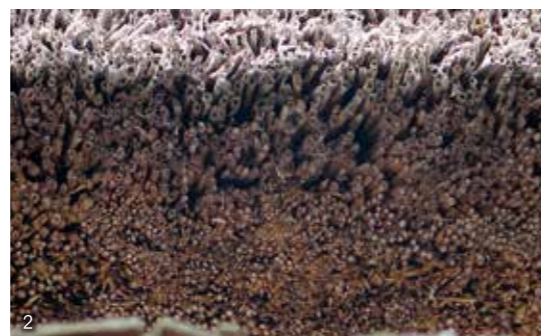
The other reason that “Ochiai Community” is endeared by people is this the community still teaches us the life that ancestors Survived with their manpower only. The life on the very steep slope still depends on manpower mainly. Even small tractors cannot go farm work in the narrow area and it cannot be done by machines. The stone walls are destroyed by rain and snow every year. The life in Ochiai has been protected by reestablishing the stone walls and plowing the earth.

## Reviving old Japanese-style houses

Until recently, building houses and thatching roofs had been done by people together in Ochiai community by bringing thatch plants. This is how the old Japanese-style houses have remained since Edo period. However, aging of the community cannot be stopped, and Ochiai community will not last much longer. That is why “Togenkyo Iya no Yamazato” project was taken by an oriental cultural researcher, Alex Kerr, and others. This project is aiming “To leave the beauty of Japanese mountains and culture to posterity in a suitable way as it is sustainable” and has produced many accommodations that keep the same style as the old houses but with modern changes such as an air conditioner and floor heating.

## The miracle of the Sansho Shrine

An attraction that is very popular among guests is the guided tour by Mr. Minami who lives in Ochiai Community. Mr. Minami had a mysterious experience as an anecdote of manpower when removing and reconstructing “the Hijiri Shirne” that was enshrined together with the guardian patron in Ochiai Community, “the Sansho Shrine”. Twelve men in the community were supposed to move the big rock, but Mr. Minami had a sore foot on that day and thought he could not be helpful. However, he managed to help anyway. Then the next morning, The pain in his foot had gone.



1) The interior of an old Japanese-style inn.  
2) There are still thatched roofs in the community.  
3) Mr. Minami, a tour guide in Ochiai.



## Farm work in Ochiai community



1) A small potato called “Gooshi-I'mo”. Iya's treat, “Gooshi-I'mo”, does not fall apart easily and it is chewy.  
2) Agriculturists in the community push soil upward while working in the field on the steep slope. This is how they have been cultivating buckwheat and potatoes. “Mino (a straw rain-cape)” is still used regularly.



3) It is known that a view from Ochiai community built with stone walls is magnificent. Tea break in a garden during farm work. It is a luxury time of mountain life.  
4) A watchdog is a reassuring partner who protects the fields from harmful animals in mountain life.  
5) A garden is colored by dried persimmons, sticky millet, dried sweet potatoes, etc. which are essential preserved food in mountain life.



“The Sansho Shrine” that Mr. Minami believes relieves the pain of his foot. People in the community go and worship anytime they have a chance.





An isolated island in the forest



# A village that continues to protect folk art.

A fairy that appears in the daytime forest  
Wooden clappers that echo in the night forest  
A folk art in Iya creates a beautiful and mysterious world.



## A small isolated island of the mountain

Each community in Oboke-Iya area has been isolated not only from its surroundings but also individually by the natural environment such as dominating rocks, deep gorges or towering groves of trees and deep forests. Therefore, there are unique festivals and folk arts remaining by each community. A seasonal festival that begins on the stage of the closed forest might be scenery that was often seen around Japan in the past.



Dancers putting on colorful clothes spring out one by one and form a ring in an open space in the forest. "Jindai-odori (Dance of the mythical age)" that looks as if a missed illustrated book. Once the dance finished, dancers leave a ring as if disappearing into the forest one by one.

## An illustrated story of the forest

There is a dance handed down from the mythical age. "Jindai-Odori" Allows us to experience the history. Originally, it was called "Kasa-Odori (Dance with Umbrellas)" or "Taiko-Odori (Drum Dance)". However, it was renamed "Jindai-Odori" because it was performed in front of the Crown Prince during the (later Emperor Showa) in Taisho period. This is one of the national important, intangible, folk-cultural, properties that remains the feature of a simple rain dance which was danced in various regions.

## A missed vesper

This place is truly an isolated island of the forest. The dark Shisho Shrine in Ushiroyama surrounded by the deep groves of trees. From only an open space for the agricultural stage of Amida-Do, you can see a round blue sky, and a starry sky once night comes. But, the moon and stars are hazy on this night, because a bonfire and lanterns for a festival are burning. "Fusuma Karakuri (sliding door Puppetry)" people sip receive amazake (sweet sake) and indulge in warm emotion during the cold autumn season. There is a completely forgotten "vesper of a lost festival"

There was a time when many people saw Japanese puppet theater. Puppets' playing a romance or struggling life made us empathize with it more. This might be similar to dramas in the modern times. Since there was not much entertainment in mountain life, people in the community started to create a stage, operate puppets and draw fusuma painting of the background by themselves. While contriving the stages, people produced "Fusuma-Karakuri" that changes fusuma paintings of the background by handling thread.



The Fusuma paintings in Iya was said to be created during late Meiji period to Taisho period. About three hundreds of them were preserved in five areas of Tokuzen and Tanouchi and so on. Especially in Ushiroyama, many fusuma paintings were found under the porch in very good condition. It thanked local people for having been airing fusuma paintings and drop curtains one by one every year. At the same time, parts of the stage were found and that makes it possible to restore the stage. Moreover, you can still watch a wonderful performance of Fusuma-Karakuri played by the preservation society of Iya Fusuma-Karakuri.





### The Furumiya Shrine

The Furumiya Shrine located under the Furumiya peak which is famous for rock-climbing. A god of fulfillment in love and easy delivery is enshrined in the recesses of the mountain path.

### An isolated island in the forest

# A legendary village,

**A place in Iya that you feel Nara period and Kamakura period closely. There are unchangeable scenery and story for five hundred years, one thousand years here.**



### The Sepulcher of Eiramiko

"The Sepulcher of Eiramiko" located in the top of a small hill in Kanjyok, common name of "Oyamasan". Although it is a very small shrine that people may miss, local people still visit and offer flowers cherishingly.

## Men from the Metropolis

There are so many legends that have been passed down in the Iya and Oboke area.

One of them is a story about the ancestors of Mt. Iya who life in the mountains here. It is said that the men named "Eranomiko" and "Onorouba" who had wisdom and skill climbed Mt. Iya with seeds for planting there, they created a community and spread weaving and farming. It is said that they arrived in 752, the same year as the ceremony to consecrate the newly made statue of Buddha in Todaiji temple consisted of hurfing and it in the capital of Nara. At that time, the lifestyle involved in hunting mainly might have been primitive. People who brought the latest technology were revered and endeared as the founders of Iya. The history changes slowly in Iya where information was insulated.

# Another Tale of the Heike,

## The mountains that hide the truth

The mountains in Iya hold many secrets. A long time ago, there were people who went into the mountains in order to keep a secret. Some of them were defeated soldiers of the Heike. The Genpei War that broke out in the Heian Period was fought in everywhere in Japan and it is said that the Genpei War became the root of intrasquad game later. The War created a great sensation to move the Japanese history, that anecdotage has been told in various regions and many legends of defeated soldiers have been remained. Many people in Iya have grown up hearing the legend

of the defeated soldiers since they were children, but the legends might be different from the true history. It is difficult to know the true story since a long time has passed. However, it is a fact that these stories were passed down. There must be some truth that story tellers wanted to tell.

It is said in this area that the Taira-no-Kunimori family who lost the battle of Yashima went across the Sanuki Mountains protecting Emperor Antoku and spent the time in Iya whether it is true or not, please come and visit the historic sites.



The crest drawn in the red flag of Heike that was handed down in Iya area is facing swallowtail butterflies.



The Kunimori family who settled down in the Iya area, its residence still stands silently backed by the forest.



Iya area where some legends of Heike remains. There are crematory ruins of Emperor Antoku and the deified shrine, and "spear-shaped Japanese cedar" that is said Kunimori planted and "the Red Flag of Heike" have been handed down.



The sound of the bell of Gion-shoja  
rings with the transience of all things  
the color of the flowers of paired sala trees  
shows the truth that all glories must fade  
Proud men will fall  
like dreams on a spring night  
Powerful men will fall  
like dust before the wind

〈The beginning of the Tale of the Heike〉



## Handwork of the daughters-in-law

“Milling” was an essential work for the life in Iya. In a village in the mountains where only a little harvest of rice was expected, local people had lived on wheat, millet, beans and buckwheat for a long time. Wheat flour was for “parched flour”, buckwheat was for “Soba” and millet was for sticky cake and dumplings, or as a preserved food or a special treat. Milling was a job for daughters-in-law in Iya. They did farm work in the mountain in the daytime and milled in the nighttime. They must have felt sleepy while milling with a stone mortar silently. That’s why they tried to keep them a wake by singing milling tunes.

“Milling tunes” were handed down at the center of the East Iya and its lyrics varied slightly with each family. It is now broadly known all over Japan by bringing them together and writing them as “The milling tune of Iya” and “The village song of Iya”, and recording them. “Milling tunes” are elegant although they are work songs. The image of “a Japanese mother” emerges who supports family perseveringly, vigorously, sometimes attractively and beautifully while labaring over a long period of time.



“Iya Soba” had been made by each family, originally without binding powder, and it is unique that its noodles work thick and easy to be cut. Although food texture varies with individual restaurants nowadays, its original flavor is brought out as in the past.

山名物 Local specialties of a mountain

# A story of milling songs of Iya

Green tea and coarse tea are made at Hiramatsu tea manufacturing mill handed down by a predecessor an ancestor. The manufacturing process having been handmade texture is also one of charms of "Aruse-tea".



山の名物 Local specialties of a mountain

# A tale of tea in the air



The Kawauchi family's tea plantation is located on the steep slopes at the back of their house where wild monkeys may fall down from time to time.

## Filled with serene atmosphere

Oboke•Iya where a river fog accumulates, the sun shines on the south and is filled with serene atmosphere is a high-quality-tea-growing district. A healthy flavor grows in nature of mountains penetrates the body and mind. In Particular, "Aruse-tea" and "Yamashiro-tea" are especially delicious tea and taken people regularly drink them in the neighborhood.

## A village of Tea-picking tunes, "Aruse"

"Aruse" located close to the border of Kochi Prefecture is the greatest tea-growing district in Iya. Looking towards the south, you see the beautiful view of the Yoshino River. Standing in the tea plantation basking the morning sunshine, you are touched by the happiness to live in such a place.

The Hiramatsu family who have been made tea for generations in this area, run the tea manufacturing mill as well as the tea plantation. "Although it is a manufacturing mill, we only have simple machines handed down by my father and rely on manpower. Making delicate tea relies on our skills. Its flavor is similar to hand-rolled tea.

The "rolling tea" song is among the folk songs of Iya.

~Picking tea no-hoi no-hoi

Pick it three time roots and leaves

Pick it going around shon-gae

People in Iya have been growing the tea by hand work singing this tune.



1) It is said that "delicious tea is grown by fog". "Hachigou-giri (Hachigou fog)" arises during the change of seasons in this area. "Hachigou-giri" is fog (a sea of clouds) that claws up the surface of the mountains in the morning with extreme different temperature. Thanks to this "Hachigou-giri", balanced tea of sweet and bitter taste can be harvested.

2) The tea in an unexplored area picked by hand with thanksgiving to a mountain god.

"The tea in Shizuoka is originally from Iya, and it was sent via through Tokaido (Edo-Kyoto highway in Edo period)", this story is also passed down.

There were mills of seven associations in this area and "Aruse tea" was packed by in paper and shipped off to other places. Later, the town office of the former West Iya, taking the initiative, named it "Kazurabashi tea". Such "Aruse-tea" is now protected by the Hiramatsu family.

## Do ghosts like it very much? "Yamashiro-tea"

"Yamashiro" is a town known for its ghost folklore.

The tea in this area has also been famous for years. It was once shipped all the way to Hanshin area, despite various obstacles, since the beginning of Meiji period. People in Yamashiro called out to people in Iya and established "the Tea Manufacturing and Sales Cooperative Association of Iya and Sanmyoumura" in 1930 when Yamashiro was called

Sanmyoumura, but it was demolished by a typhoon. In post war 1956, the mill of "Sanmyoumura Agricultural Cooperative Association" was completed using old elementary school buildings. Soon the Tea Manufacturing Association became independent from the Agricultural Cooperative and was associated with the current "Yamashiro Tea Manufacturing Association". This association gave birth to "Ghosts tea".

Mr. Yamauchi, who was involved in establishing Yamashiro Tea Manufacturing Association from the beginning serves as the financial director and is a director of Unexplored Yamashiro Oboke Ghost village in Shikoku. In his garden, there is a small shrine of a princess coming from the capital. This place had been a significant location for travel for a long time where people could look out over the upper and lower stream of the Yoshino River. Yamashiro tea would relieve travelers' thirst and they introduced people to its deliciousness.

# The green Yoshino River

## To challenge the stream

The mountains are green and the stream is also green. The whole Oboke area that is colored by various greens such as Chitose green, a deep green, Byakuroku, a white green, etc. It's highly rated for canoeing and rafting by canoeist and rafting lovers. People who visit have are amazed by the beautiful water. More than anything, water is abundant all year round and people can enjoy it any time they want. "We cannot find such a river anymore", said a canoeing specialist. In the northern provinces, they can not do canoeing or rafting in the winter. The rivers in the south often dry up in the summer. However, the Yoshino River is blessed with an abundant streamflow in the middle of summer and winter. Therefore, many people try to brush up their skills of canoeing and rafting.

By the way, the Yoshino River is the first river to have commercial rafting, and a rafting company was founded.

## To float on the stream

Nowadays the Yoshino River is crowded with rafting boats, but in the

distant past there were simple boats called "Kandori-bune" floating on its surface.

Many people started to visit Oboke•Koboke, which had been said to be the most perilous pass in Japan, since 1891 due to the opening of a national road. Then, a man started up some river fisheries on Kandori-bune for tourists. He was touched by the splendid scenery and started Oboke sightseeing boat for guests.

The Oboke Gorge Sightseeing Boat that is operated by a stable power-driven vessel. Although there is age limit for rafting and canoeing, even families with babies can enjoy the sightseeing boat. "Kotatsu-bune", on which you can enjoy snow-scene viewing, appears in the winter.



### Memory of 100 million years old

Oboke was designated as a national natural monument in March, 2014. The rocks in Oboke was created 200 to 100 million years ago in the deep sea and named crystalline schist in a scientific name.

# The dream of Vine Bridge

Human bonds a vine bridge,  
which is destined to be cut, dreamed.

It is said that “vine bridge” were thrown so that defeated soldiers of Heike could cut off it in order to escape from pursuers. Old vine bridge were unreliable swaying pontoon bridges.

It is said there were thirteen vine bridge in Iya during Edo Period to Meiji Period, but all of them disappeared once. Later a vine bridge in Zentoku was restored by volunteers in 1928.

This bridge was rebuilt for the tourist

attraction rather than life. Therefore, it has been improved aiming at a stable and safe bridge despite its appearance. For that reason, it is cut and rebuilt strongly every three years. The vine bridge is located 14 meters above that water’s surface and its length is 45 meters. You can see the gorge flowing with a spray of water from the gap between wood blocks, called “Sanagi”. Laid under the bridge one can feel the thrill of walking across the bridge as it sways



by every step.  
The bridge deepens the bonds of a family relying on each other and companions cheering each other up.



**The Double vine bridge in Oku-Iya**

One-hour-drive from “the vine bridge in Iya”, there are two vine bridge thrown in Oku-Iya. “The Double vine bridge in Oku-Iya” consists of man’s bridge and woman’s bridge and there is a cable car named “Yaen” that goes across the gorge by human power nearby.



## Rebuilding work of the vine bridge



The current bridge is built with not only creeping plants but also solid wires as a reinforcement.



The bridge that building work is ongoing. You can only watch it, but it is very thrilling.



It was cut off every rebuilding work before, but now it is dismantled.

# Hospitality of the mountains

## A night in mountain life

Many of the true charms of the mountains may lurk in the night. Even a night, please be a resident and enjoy the night in the mountains. There are many comfortable accommodations that you can enjoy slow mountain life.

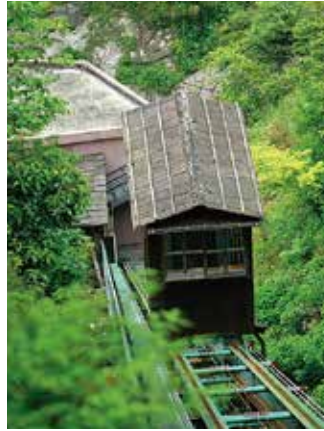


The night in the mountains deepening the charm of "the hamlet in the sky". The sky, the mountains and the river are dyed deep blue in the mountain village without lights and its gradation attracts people. The silence of the night that faint sound reaches to the ears. As the sound of fire flaring reaches to the heart.



The night in the mountains producing so many stories. The legendary night that told many nights and passed down to us. A night that demons, ghosts, a princess and defeated soldiers stride. A night that comfortable human voices touch the heart. Night means get together. Let's spend a night to take to, get close to and talk to each other.





Oboke-Iya offers a unique experience.

You never be pressed for time nor need to get ahead of it.

Look back on each memory fondly.

To stare the future that you should follow naturally, listening to the words of old people.

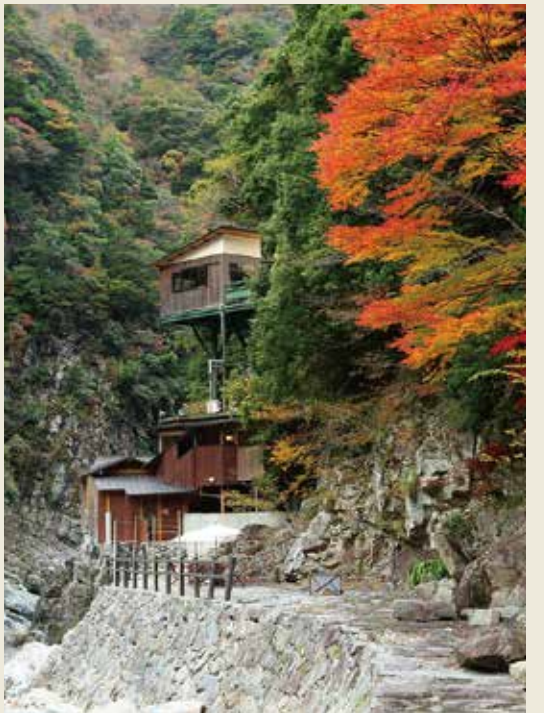
You will tremble with the mysterious world and understand  
what human beings should challenge and pray humbly.

We hope you have a wonderful time here.

Please relax in one of the many hot springs in Oboke-Iya.



Hot springs in this area where it is said that Emperor Antoku soaked in for medical purposes when he entered Iya area protected by Taira-no-Kunimori. If it is true, one of them is the one where Emperor soaked. There is a name "Furonotani (a valley of a bath)" remained and some hot springs were found along the river of the gorge in the past. There are still some hot spring hotels along the gorge. The happiness to soak in a hot spring surrounded by the mountains, to fit into the seasonal scenery undressing and to spend the time relaxed. The happiness of Oboke-Iya might be the one that people live like human beings and notice true themselves.



There is a hot spring spa in Oboke-Iya. The spaciousness to soak in a hot spring in nature. The happiness to enjoy a hot spring viewing a snow-scape, looking up the peaks, listening to the murmuring of the gorge, reflecting the green of the forests and smiling at the sunlight filtering through trees and gleam of hot water. The unexplored hot spring spa where people came over a great distance, went into the mountains and passed perilous pass and finally reached. There has been secret hot springs waiting to warm your body from the core. Spending time at a hot spring hotel relaxed, you would see the color of the mountain range changing to blue and full of sparkling stars in a dark black sky. A steam of a feast mixes with a steam of a hot spring at dusk and a night that you cannot forget starts.

# Stay

Accommodations

♨ Hot spring △ Camping and cottages

♨ Hotel Iya Onsen	TEL.0883-75-2311	Matsumoto, Mtsuo, Ikeda
♨ Awanosho	TEL.0120-018-081	Hakuchi, Ikeda
Business Hotel Awa-Ikeda	TEL.0883-72-1010	Ueno, Ikeda
COCO-CROSS Hostel	TEL.0883-72-0011	Sarada, Ikeda
Hotel Eleven	TEL.0883-72-8115	Sarada, Ikeda
Business Hotel Yamashiro	TEL.0883-72-0277	Machi, Ikeda
Fukuya Ryokan	TEL.0883-72-0868	Machi, Ikeda
Sushiroku Ryokan	TEL.0883-72-7422	Machi, Ikeda
Marufuku Ryokan	TEL.0883-72-0027	Machi, Ikeda
Hakuchi Onsen Konishi Ryokan	TEL.0883-74-0311	Hakuchi, Ikeda
Kawakami	TEL.0883-74-0829	Nakanishi, Ikeda
Daikokuya Ryokan	TEL.0883-72-0587	Shima, Ikeda
Takaoka Ryokan	TEL.0883-72-1041	Shima, Ikeda
Hakuchi-so	TEL.0883-74-0487	Hakuchi, Ikeda
Minshuku Okada	TEL.0883-74-1001	Sano, Ikeda
Awa Ikeda Youth Hostel	TEL.0883-72-5277	Nishiyama, Ikeda
Minshuku Tabibito-Yado	TEL.0883-76-4727	Hakuchi, Ikeda
Hyakunenkura	TEL.0883-74-0930	Miyanomae, Kawasaki, Ikeda
Kakumi-no-Hatago	TEL.0883-86-1115	Kawasaki, Ikeda
Haretoke Design Hostel	TEL.0883-75-2208	Ori, Ikeda
♨ Matsuogawa Onsen	TEL.0883-75-2322	Kurokawa, Mtsuo, Ikeda
△ Iyakei Campground	TEL.090-9553-3795	Matsumoto, Mtsuo, Ikeda
♨ Hotel SunRiver Oboke	TEL.0883-84-2111	Nishiu, Yamashiro
♨ Hotel Oboke-kyo Mannaka	TEL.0883-84-1216	Nishiu, Yamashiro
♨ Kenmi Onsen	TEL.0883-86-2982	Kurokawa, Yamashiro
Backpackers	TEL.0883-86-3033	Shirokawa, Yamashiro
Guesthouse Boke Nouen	TEL.090-1578-1611	Kamimyo, Yamashiro
Nenrinan	TEL.0883-84-1629	Kamimyo, Yamashiro
Smonkey	TEL.0883-84-1087	Shimomyo, Yamashiro
Inomoto-beya	TEL.090-7786-1655	Busshi, Yamashiro
Guesthouse Osakanakunti	TEL.0883-86-2086	Otsuki, Yamashiro
Momonga Village	TEL.0883-86-2334	Nobumasa, Yamashiro
YAMAYA	TEL.0883-86-1898	Okawamochi, Yamashiro
△ Shiozuka Highland Caground	TEL.0883-86-3077	Tairano, Yamashiro
Gakko-no-yado Aruse	TEL.0883-84-1337	Aruse, Nishi-Iya
Hotel Hikyo-no-Yu	TEL.0883-87-2300	Oinouchi, Nishi-Iya
YOKI Guesthouse	TEL.0883-86-2334	Ichiu, Nishi-Iya
♨ Hotel Kazurabashi	TEL.0883-87-2171	Zentouku, Nishi-Iya
♨ Iya Bijin	TEL.0883-87-2009	Zentouku, Nishi-Iya
Kazuraya	TEL.0883-87-2831	Kanjo, Nishi-Iya
Iya Kanko Ryokan	TEL.0883-87-2125	Zentouku, Nishi-Iya
Minshuku Minami	TEL.0883-87-2342	Zentouku, Nishi-Iya
Minshuku Iya-so	TEL.0883-87-2242	Zentouku, Nishi-Iya
Minshuku Oyama-so	TEL.0883-87-2133	Kanjo, Nishi-Iya
Ku-Nel-Asob	TEL.080-6282-3612	Enoki, Nishi-Iya
Tabibito-no-yado Nakone	TEL.0883-72-5557	Enoki, Nishi-Iya
Rental House FOREST	TEL.0883-87-2367	Shigesue, Nishi-Iya
△ Iya Fureai Park Campground	TEL.0883-76-8585	Oinouchi, Nishi-Iya
△ Kazurabashi Campground	TEL.090-1571-5258	Kanjo, Nishi-Iya
Kiritanisan-so	TEL.0883-88-2013	Sugeoi, Higashi-Iya
♨ Iyashi-no-Onsenkyo	TEL.0883-88-2975	Sugeoi, Higashi-Iya
Maruishi Parkland	TEL.0883-88-2768	Sugeoi, Higashi-Iya
Hotel Okuiya	TEL.0883-88-2045	Kyojo, Higashi-Iya
Heike-so	TEL.0883-88-2848	Kyojo, Higashi-Iya
Yoshida Ryokan	TEL.0883-88-2843	Kyojo, Higashi-Iya
Kajiya Iya Romantei	TEL.090-5144-9277	Kyojo, Higashi-Iya
Minshuku Iya Hakkei	TEL.0883-88-2358	Nakaue, Higashi-Iya
Kominka Yado Koya	TEL.080-6378-8984	Kubo, Higashi-Iya
Minshuku Matsuura	TEL.0883-67-5009	Minokoshi, Higashi-Iya
Minshuku Heike-no-Yado	TEL.0883-67-5296	Minokoshi, Higashi-Iya
Unkai-so	TEL.088-622-0633	Top of Mt. Tsurugi, Higashi-Iya
Tsurugi-san Chojo Hutte	TEL.088-623-4533	Top of Mt. Tsurugi, Higashi-Iya
Tsurugi-Jinija Minshuku	TEL.0883-67-5017	Minokoshi, Higashi-Iya
Tougenkyo-Iya	TEL.0883-88-2540	Ochiai, Higashi-Iya
Minshuku Umemoto	TEL.090-5271-4015	Ochiai, Higashi-Iya
Ryugake Cottage	TEL.080-2981-6221	Tsurui, Higashi-Iya
Chiiori Trust	TEL.0883-88-5290	Tsurui, Higashi-Iya
△ Oku-Iya Niju Kazurabashi Campground	TEL.0883-88-2640	Sugeoi, Higashi-Iya
Tsurugi-san Enpuku-ji	TEL.0883-67-5276	Sugeoi, Higashi-Iya
Isamuro Ryokan	TEL.0883-78-2051	Tsuji, Ikawa
△ Ikawa Finland Cottage	TEL.0883-78-3003	Hirayama, Ikawa
Guesthouse UEDA	TEL.0883-78-2227	Nishikawa, Ikawa
△ Kenko-to-Fureai-no Mori Cottage	TEL.0883-77-4320	Shibou, Mino
Nashikubo-no-Ie	TEL.090-9775-2899	Tachinoyama, Mino

♨ One day Hot Spring Facilities Available

