

Hidden Japan

Iya Valley Oboke Gorge



Miyoshi Tourist Guide



Experience this otherworldly place,
teeming with natural wonders,
home to legends and adventure,
and where old world charm awaits.



Ochiai Village, beyond a field of soba.

**Miyoshi City
Driving Map**

Tourist sites in Miyoshi City
**OBOKE IYA TOURIST
NAVIGATION**
<https://miyoshi-tourism.jp/en/>



Miyoshi City Tourism Association
@miyoshi_kankou

Nishi Awa
Mt. Tsurugi-Yoshino River
Tourism Zone

Self-Guided Walking Tours



One of the best ways to experience the area would be to get out of your vehicle and see some sights on foot. All the places below are great spots for exploring on your own. Detailed maps and area information are available at each location, found at places with the * symbol. Approximate total time to explore each place is given.



Climb Mt. Tsurugi for a Panoramic View

Starting at Minokoshi*, take either the chairlift half-way up, or choose to climb the whole route. If you walk, the first section will be under a canopy of maple trees which is lovely in the autumn. Either way, be sure to stop by the Otsurugi Shrine where you can taste the mountain's renowned spring water. When you finally crest the broad summit you can enjoy the breathtaking view from various spots, or even choose to hike further to one of the neighboring peaks. Large huts* on top offer meals and lodging. (4-5 hours)



Seek Out Eerie Yokai Monster Statues

Start at the Yokai Museum* in the Roadside Station Oboke*, go 200 meters down Rt 32 and turn left onto Rt 272 where the first statue appears on the corner here. Follow Rt 272 through the narrow side valley and try to spot all the statues along here (about ten total). Turning at the first left to go over the bridge will lead you to a couple more. Back on Route 272, you'll eventually reach Fujinosato Park (about 2km from start) for the last statue. A longer version with more statues is also possible. (1.5-2 hours)



Traverse the Old Iya Highway By Foot

Starting in central Nishi-Iya, follow the valley's original road of Rt 32 northward into Iyakei to enjoy the gorge's magnificent view points, including the impressive "Hi-no-Ji" Bend. Later, take a break at the Iya Onsen* to ride the cable car down for a riverside bath, and then continue on to the dizzying Peeing Boy Statue overlook. Follow the curvy hillside road further down through thick forest and past other gorge viewpoints to Deai bus stop. (4-5 hours) (Buses travel this route as well if you wish to shorten the trip.)



Stroll Along Ikeda's Historic Streets

From JR Awa-Ikeda Station*, head down through the old covered arcade and then cross the main road to enter the old town. The streets here are lined with a mix of newer buildings and traditional *Udatsu* architecture. Be sure to stop at the Ikeda Tobacco Museum* which is set in a lovely old house, and have a break within the small courtyard garden here. Side-streets branch out here and there and are worth exploring, while heading north from the small red-roof shrine leads to the peaceful Suwa Park. (1-2 hours)



Experience Nature at Kurozo Marshland

Walk out from the parking area* and follow the loop path to the right out into the main marsh. Depending on the season you will see different flowers in bloom. Various birds make their home here, as well as a large range of butterflies. The sound of croaking frogs fills the air, and in the summer the cicadas are also buzzing. Different side paths lead off for further exploration while others criss-cross the marsh. On the far end, a trail leads down to/from the Matsuogawa Onsen*. Picnic points are numerous. (1.5-3 hours)



Explore Ochiai Mountainside Village

From the bottom, follow the old stone footpaths up into the village, passing by the small terraced farm plots as you see the residents go about daily life. Visit the historic Nagaoka-ke house* to walk through a traditional Iya residence, and then climb further to Sansho Shrine and take a break under its cool old-growth cedar trees. Continue up the various paths more, where the view gets better with every step as the thatched roofs of the Togenkyo-Iya cottages peek out here and there. Every season offers its own unique scenery. (1.5-3 hours)

Workshops **Connect with local people through hands-on learning experiences!**

① Traditional Soba Making



Learn how to make the famous Iya Soba. With this class you can experience the whole process including grinding the buckwheat by stone mortar, kneading out the dough by hand, and cutting the noodles. Then feast on what you made. No experience needed to enjoy!

Contact: Tsuzuki Atelier
☎0883-88-5625 Fax:0883-88-5415
Prior reservation of at least 3 days needed.

MAPLE 357 077 599 * 14

② Henro Soba Making



Historically, Iya Soba has been given to Henro (pilgrim) travelers, and with this class you can experience the process of soba making, including mixing and kneading the dough, rolling it out, and cutting up noodles. After eating what you've made, you'll be given a certificate of completion.

Contact: SunRiver Oboke ☎0883-84-2111
Prior reservation of at least 2 days needed.

MAPLE 357 271 010 * 20

③ Konnyaku Making



By using indigenous Japanese yams, learn the process of making *konnyaku* (yam cake). The locally grown yams are prized in this region, and by following a time-honored process passed down through generations, you can make this traditional countryside delicacy in a lovely natural setting.

Contact: Kirisako Village ☎0883-86-1898
Prior reservation of at least 3 days needed.

MAPLE 357 450 522 * 00

Miyoshi Quality

Taste the bounty of offerings from the unspoiled mountains and rivers, as the time-honored local cuisine includes wild game and macrobiotic delicacies. Throughout Japan, this region is known for its hearty, natural flavors.

Iya Soba

As the Iya Valley is an area renowned for growing buckwheat, the short, thick hand-made *soba* noodles that are ground with a stone mill are a famed culinary delight. Feel the warmth of this delicate, traditional taste.



Hirara Yaki

Cooked on a large flat stone or griddle, a wall of *miso* paste encloses a robust stew of river trout, tofu, and vegetables. This unique aromatic feast is indigenous to Iya, and able to be reserved at some accommodations.



Omiki-nabe

The base for this local hot-pot is a mix of *sake*, *miso*, and soy sauce, and served with Tokushima area pork and various vegetables. Available at the Shikoku Sake Festival (mid-February) or at other hotel/restaurants.



Iya-konnyaku, Iwa-dofu, Goshi-imo

The culinary bounty of the Iya Valley farms is sure to excite those who appreciate pure flavors. The local *konnyaku* (yam cake) is firm and hearty, the famous *iwa-dofu* (stone tofu) is so dense that a large brick of it was traditionally carried by a single strand of rope, and the chewy *goshi-imo* (potato) are valued for their solid consistency.

Soba-gome Zosui

This porridge-stew is made with the whole grains of buckwheat. Notable for its healthfulness, this local meal is often cooked with chicken, mushrooms, and wild mountain sprouts.



Deko Mawashi

This uniquely Iya offering consisting of a thick slice of *konnyaku* yam cake, a hefty cube of "stone" tofu, and a dense local potato, all skewered together, slathered with *miso*, and slow roasted around a fire.



Heike Gozen

This traditional boxed set meal of local farm products features recipes that date back to the ancient days of the Heike, with the offerings based on what the season has to offer.



Grilled Ayu and Amego

The local *ayu* sweetfish and *amego* river trout are taken from the clear mountain streams, and after being encrusted with salt, they are slowly grilled on skewers around a charcoal fire.



Wild Game Meat

Also referred to as *gibier* in Japanese (taken from the French term for wild game), in Miyoshi City this is a traditional fare, as the deep mountains have been superb hunting grounds since long ago. Wild boar and deer are the main offerings, served in a variety of styles throughout the area.

*The products and foods listed above are available at various places. Please contact the Miyoshi City Tourist Office for more information.
☎0883-76-0877

The Yokai Menu

Special dishes based on local monster legends!

Hidaru Ramen

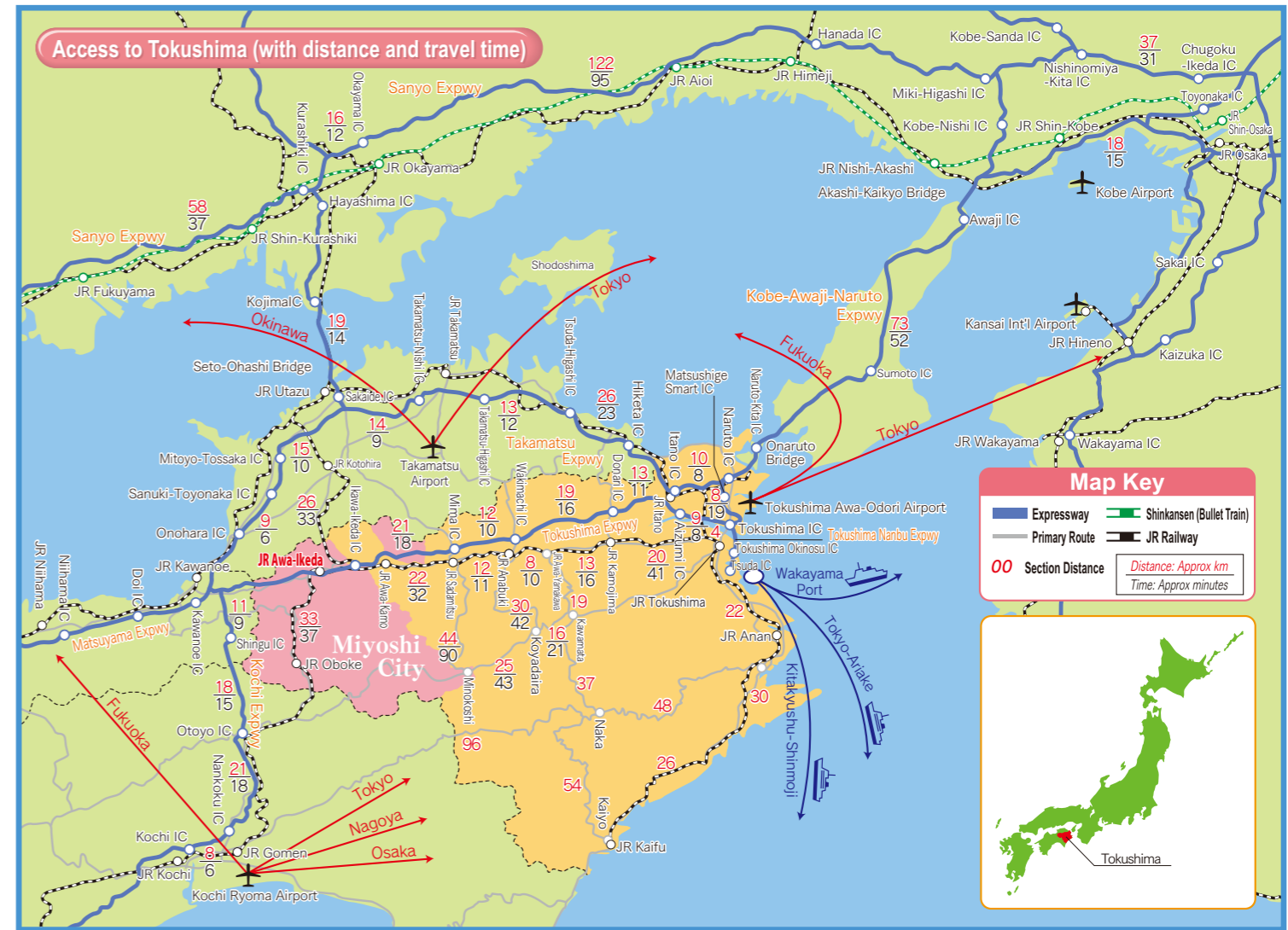
Named after the legendary *Hidrugami* monster, who entrances people to a realm of lethargic gluttony, this potent *ramen* noodle soup is decked with hunks of boar meat and wild mountain sprouts.



Yokai Sweets Kappa-na

Satisfy your sweet-tooth with some *Kappa-na* soft ice cream, flavored with a mind-bending mix of green tea and charcoal, and adorned with fresh tea leaves.

For inquiries, contact: Restaurant Mannaka
☎0883-84-1211



Miyoshi City Access Guide

Necessary Travel Time

- JR Train
 - From JR Tokyo.....JR Okayama..... JR Awa-Ikeda About 5 hrs
 - From JR Shin-Osaka.....JR Okayama..... JR Awa-Ikeda About 2 hrs 30 min
 - From JR Okayama..... JR Awa-Ikeda About 1 hr 30 min
 - From JR Tokushima..... JR Awa-Ikeda About 1 hr 10 min
 - From JR Takamatsu..... JR Awa-Ikeda About 1 hr
 - From JR Kochi..... JR Oboke About 1 hr
 - From JR Matsuyama.....JR Tadotsu..... JR Awa-Ikeda About 3 hrs
 - From JR Awa-Ikeda..... JR Oboke About 20 min

- Car
 - From Kobe.....Tokushima..... Awa-Ikeda About 2 hr 30 min
 - From Okayama.....Zentsuji..... Awa-Ikeda About 1 hr 40 min

- From Airport (by car)
 - From Kochi Ryoma Airport to Oboke.....About 1 hr 20 min
 - From Takamatsu Airport to Awa-Ikeda.....About 1 hr 20 min
 - From Tokushima Awa-Odori Airport to Awa-Ikeda.....About 1 hr 20 min

*From Awa-Ikeda to Oboke is about 30 minutes by car.

- Highway Bus
 - From Osaka.....Awa-Ikeda Bus Terminal About 3 hrs 50 min
 - From Kobe.....Awa-Ikeda Bus Terminal About 3 hrs

●Inquiry
Miyoshi City Tourist Information
 ☎0883-76-0877
Miyoshi City Office Tourism Strategy Division
 2145-1 Machi, Ikeda-cho, Miyoshi City, Tokushima, Japan 778-0002
 TEL 0883-72-7620 FAX 0883-76-0203

Event Guide

*Event location and dates are subject to change. Please check beforehand for more information.

Oboke-Iya Area

Shiozuka Highland Field Burning

Late march

See the highlands flare up in bright red!

For one night each spring, a fire-line is set alight to help protect and support natural vegetation. The controlled flame crawls across the hills like a fiery snake. An amazing sight!

Northern Area

Ikeda Awa-Odori Festival

August 14-16

For 3 days during the Obon Holiday, Ikeda explodes with energy! About 30 teams of costumed dancers and bands fill the streets of Ikeda, as the town roars to life. The ancient Awa-Odori dance is renowned for its ardor. Join the fun!

Oboke-Iya Area

Yokai Festival

Late November

Celebration in the hometown of Konaki-Jiji!

This fun festival in honor of mythical local Yokai monsters during the autumn leaves includes a portable Yokai shrine, a Yokai parade, and even a Yokai band!

Northern Area

Miyoshi Nagayoshi Parade

Early November

A tribute to the local-born samurai lord of the Sengoku Period!

This festival includes lots of warrior-costumed participants honoring the ancient ruler Miyoshi Nagayoshi, who was born right here in Mino. See classic samurai come to life!

Oboke-Iya Area

Iya Fusuma-karakuri, traditional Japanese sliding screen stage art

Every other Saturday in October

Enjoy the nostalgic comfort with this refined performance, on the stage surrounded by rich nature.

Northern Area

Shikoku Sake Festival

Late February

Sample some of Awa-Ikeda's renowned locally-produced sake!

Various sake producers from across Shikoku converge for this large tasting event, and the local breweries open their doors for tours. Not a time for teetotaling!

Oku-Iya Area

Yukigassen Shikoku Tournament

Late January

Feel the heat of excitement on a cold winter day!

Different teams compete in a snowball fight competition, with the winner going to the national championship. Your passions will burn even if only watching.

Miyoshi Specialties

Souvenirs of Miyoshi
 Find out more at **Miyoshi Specialty Web Shop**
www.miyoshi-yamabiko.jp

Yokan
 These cute bite-sized little treats are a specialty with a long tradition in Ikeda. Made of sweet bean jelly, they come in a variety of shapes and styles.

Tea
 By using the local tea leaves that are grown in the rugged mountains, Miyoshi tea has a smooth flavor that is deep and hearty.

Traditional Sweets
 Miyoshi City has a long history of producing hand-made sweets, including sweet bun with citrus, soybean spread with sugar, or sponge cake mixed with Japanese mugwort. These simple but pure flavors are popular with local people.

Oboke Japanese Black Tea

This tea is grown using traditional, steep slope agricultural methods, and has a smooth, refreshing flavor.

Yuzu Citrus Syrup

This syrup is a natural product made from 100% organic yuzu citrus.

Traditional Indigo Dye Products

These leather products utilize the skin of deer that were hunted down at Iya area, and the natural indigo planted in Tokushima for over 600 years. As the design of indigo dye changes every time, each product is unique in texture and fibre.

Yuzu Citrus Gelee

This refreshing gelee is a natural product made from 100% organic yuzu citrus.

Soy Sauce

The local soy sauce is highly recommended for those who can appreciate traditional, hand-made tastes.

Local Sake

Miyoshi sake uses the area's natural ingredients, creating an exquisite taste revered by aficionados.

Oboke • Iya

Active Area

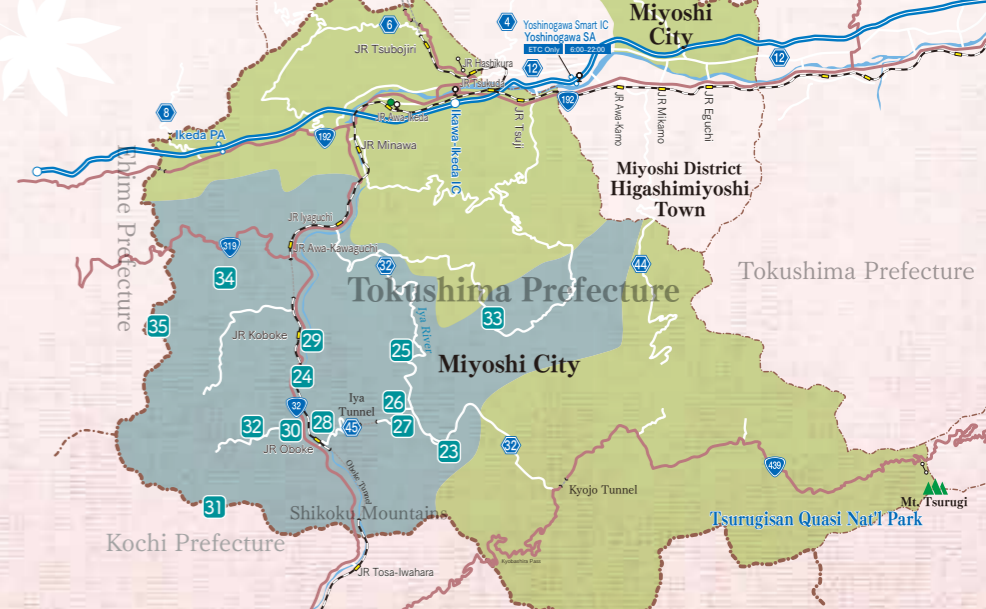
This scenic region is recommended by the Michelin Green Guide

World-class attractions and activities abound in the Oboke / Iya area, which is filled with dramatic valleys and majestic views. The breathtaking road through Iyakei with the emerald waters of the Iya River flowing below is praised by travel specialists, including the Michelin Green Guide. Crossing the famed Iya-no-Kazurabashi Vine Bridge brings a thrill to anyone, while those looking for more adventure can go rafting down the torrents of the Yoshino River as it blasts through the stunning Oboke Gorge.



Unkai (Hachi-Go-Giri) "Sea of Clouds"

The valleys in and around Oboke through which the Yoshino River flows offer a rare natural phenomenon called *unkai*, which means "sea of clouds". Also referred to locally as *hachi-go-giri*, this awe-inspiring cloud formation occurs in the early mornings (7AM or before) when the fog settles into the valley, and if seen from above it looks like an expanse of ocean with the mountain tops peeking out like islands. Most common when the seasons change in March and April, as well as from October to December, there are several recommended viewing points for those who wish to witness this amazing sight. (*Unkai* viewpoints are marked on the map with this symbol: ☁)



23 Iya-no-Kazurabashi (Vine Bridge)

One of Japan's Three Strange Bridges, the astounding Kazurabashi suspension bridge is made of local vines and is a nationally designated Important Cultural Property. Legends say that the ancient Heike residents made such bridges in order to easily cut them away if pursued by invading warriors. Rebuilt every 3 years and stretching 45m long, 2m wide, and swaying 14m above the river below, walking across the creaking vines of this back-country marvel will surely make your heart pound!

Contact: Miyoshi City Tourist Information ☎0883-76-0877
(For car navigation, use this number: 0883-87-2200)
Location: 162-2 Zentoku, Nishi-Iya, Miyoshi City
Entry fee: Adults 550 yen, Children 350 yen
Operating time: All Year



Biwa Waterfall



25 Iyakei / Peeing Boy Statue

The spectacular lower reaches of the Iya Valley are known as *Iyakei* (gorge area), where for about 20km the emerald waters meander through undeveloped mountains and dramatic cliffs. One can follow the mostly one-lane old "Iya Highway" (Rt 32) which twists precariously high along the mountainside through here. About halfway through the gorge, perched on a protruding precipice with a 200m drop-off, stands the daring little Peeing Boy Statue. Built in 1968, this bronze sculpture was to celebrate the local tradition of boys who would courageously relieve themselves from this magnificent viewpoint.

Contact: Miyoshi City Tourist Information ☎0883-76-0877
Location: Between Matsuo Ikeda and Nishi-Iya in Miyoshi City



Along the old "Iya Highway"



Overlook from the Peeing Boy Statue

Iyakei / Hi-no-Ji Bend

Though the views along the "Iya Highway" as it winds through Iyakei are as plentiful as they are impressive, of particular note is the renowned Hi-no-Ji Bend. At this point in the gorge, the Iya River below strikingly hooks around a mountain, providing a sight like no other. Taking its name due to its resemblance to the Japanese letter *hi* (ひ), this fantastic spot is beautiful any time of year.

Contact: Miyoshi City Tourist Information ☎0883-76-0877
Location: Between Matsuo Ikeda and Nishi-Iya in Miyoshi City



24 Oboke Gorge • Koboke Gorge

The steep canyons formed by the rushing Yoshino River are known as the Oboke and Koboke Gorges, the names of which interestingly translate as "big step danger" and "little step danger" probably due to the historic risks involved when traversing through these formidable wonders. Believed to have formed 100 to 200 million years ago, the 8km long walls of sculpted rock in this impressive National Natural Monument beautifully change in appearance with the seasons, and can now be safely viewed by road from above or by boat from below.

Contact: Miyoshi City Tourist Information ☎0883-76-0877
Location: Between Shigezane and Kamimyo, Yamashiro, Miyoshi City



Oboke Gorge Pleasure Boat
Contact: ☎0883-84-1211
Entry fee: Adults 1,500 yen, Children 750 yen
Operating time: All year

mapB-4 mapPL001 357 151 826 * 18

26 Iya Fureai Park

Enjoy the abundance of nature at this park along the banks of the Iya River. Offering a fun mono-rail ride that wanders 430m along the mountainside gardens here, there is also zip-line across the Iya valley and a tranquil campground. It's also a popular spot to try fishing.

Contact: ☎0883-76-8585
Location: 379 Oinouchi, Nishi-Iya, Miyoshi City
Operating time: March to November



27 Roadside Station Nishi-Iya

This rest area in central Nishi-Iya is part of Japan's Michi-no-Eki system and is near to the Iya-no-Kazurabashi. Lots of hand-made Iya souvenirs and treats are available here, including Iya Soba and local honey.

Contact: ☎0883-87-2670
Location: 348-2 Oinouchi, Nishi-Iya, Miyoshi City
Operating time: Open all year (shop closed Dec 20 to end of Feb)



28 The Heike Residence Museum

Traditional materials are displayed in thatched roof buildings. The museum exhibits materials and relics of Heike Clan.

Contact: ☎0883-84-1408
Location: 46 Higashinishioka, Nishiyayamamura, Miyoshi City
Operating Time: 9:00-17:00
Entry fee: Adults 500 yen, Children 300 yen



mapB-4



mapC-4

29 Nature Tourism

Born of the earth's subterranean movements, landscapes in Miyoshi City witness the change of time over millions of years. As the venue of rafting and wakeboard championships, the nature here is world renowned. In Yoshino River, rapid and slow water offer various kinds of water activities. Enjoy outdoor activities in this otherworldly place!

Contact: <https://miyoshi-city.jp/naturetourism/>



mapC-2

30 Roadside Station Oboke

Located near the heart of the Oboke Gorge, this large rest area is part of the Michi-no-Eki system and offers an array of souvenirs and treats, as well as a rock museum full of stunning geological treasures. This is also home to the unique Yokai Museum, which is great for anyone looking for a spooky and fun experience.

Contact: ☎0883-84-1489
Location: 1553-1 Kamimyo, Yamashiro, Miyoshi City
Operating time: Open daily March to Nov, but closed on Tuesdays Dec to Feb

mapB-5 mapPL001 357 151 315 * 35



Yokai Museum

The Yamashiro area of Miyoshi City is historically noted as being home to over 150 spots for legendary monsters (called *Yokai*), probably due to the daunting landscape. These mythical monsters have a variety of different attributes, and are well known across Japan for their strange and peculiar ways. The Yokai Museum is home to a collection of *Yokai* sculptures, images, stories, and history. Fun for kids or anyone interested in traditional folklore.

Contact: ☎0883-84-1489
Location: 1553-1 Kamimyo, Yamashiro, Miyoshi City
Entry fee: For museum, adults 700 yen, children 350 yen

mapB-5 mapPL001 357 151 315 * 35

31 Mt. Nokanoike

Rising to a height of 1,294m, the misty primeval forest of this mountain is home to a variety of rare plant species, including true rhododendron and blunt-leaved bog moss. Featuring boardwalks and ancient shrines, it is also the site of a rhododendron festival in early June when the flowers are in bloom.

Contact: Miyoshi City Tourist Information ☎0883-76-0877
Location: Kamimyo, Yamashiro, Miyoshi City

mapB-5 mapPL001 207 055 725 * 13



32 Statue of Konaki-jiji

Konaki-jiji is a famous *Yokai* monster that was born in the perilous Oboke area and featured in the acclaimed manga comics of the late author Shigeru Mizuki. Erected in his honor and featuring Mr. Mizuki's autograph, *Yokai* fans from across Japan come here to pay tribute.

Contact: Miyoshi City Tourist Information ☎0883-76-0877
Location: Kamimyo, Yamashiro, Miyoshi City

mapB-5 mapPL001 207 179 407 * 44



©Mizuki Production

33 Ryugatake

The bold cliff-face of Ryugatake, with its abundance of wild maple trees, is a prominent feature of the sparkling Matsuo River Valley. Rising to a height of 950m and about 4km long, it bursts with color in the autumn as the maple leaves turn vivid red, and is noted as being featured in traditional paintings.

Contact: Miyoshi City Tourist Information ☎0883-76-0877
Location: Shimomyo, Nishi-Iya, Miyoshi City

mapD-4 mapPL001 357 343 433 * 42



34 Handa Iwa Rocks

The pristine surroundings of these giant stones are well known for their beauty. Fireflies come out in abundance in the summer, while the autumn leaves are simply spectacular. This riverside area offers a nostalgic feel with its old-time waterwheel and as being a notable resting place for traveling ancient samurai.

Contact: Miyoshi City Tourist Information ☎0883-76-0877
Location: Yorihiro, Yamashiro, Miyoshi City

mapB-3 mapPL001 207 416 625 * 3



35 Shiozuka Highland

This fantastic 100 hectare plateau is dominated by the 1,043m peak of Shiozuka-mine. Spreading across both Tokushima and Ehime Prefectures, on clear days this lofty area offers views as far as the Seto Sea and beyond to the north. At night the unobstructed sky explodes with stars, while the early morning provides a chance to see the wondrous *unkai* (sea of clouds). Each spring the area is burned off in a glaring display of snaking fire. Bungalows and camping are available along with other outdoor activities.

Contact: Shiozuka Highland Campground ☎0883-86-3077
Location: Tairano, Yamashiro, Miyoshi City
Operating time: Open April 1 to Nov 30 (closed in winter)

mapA-4 mapPL001 207 352 780 * 36



Oku-Iya Hidden Area

A secret place of Heike legends and natural wonders

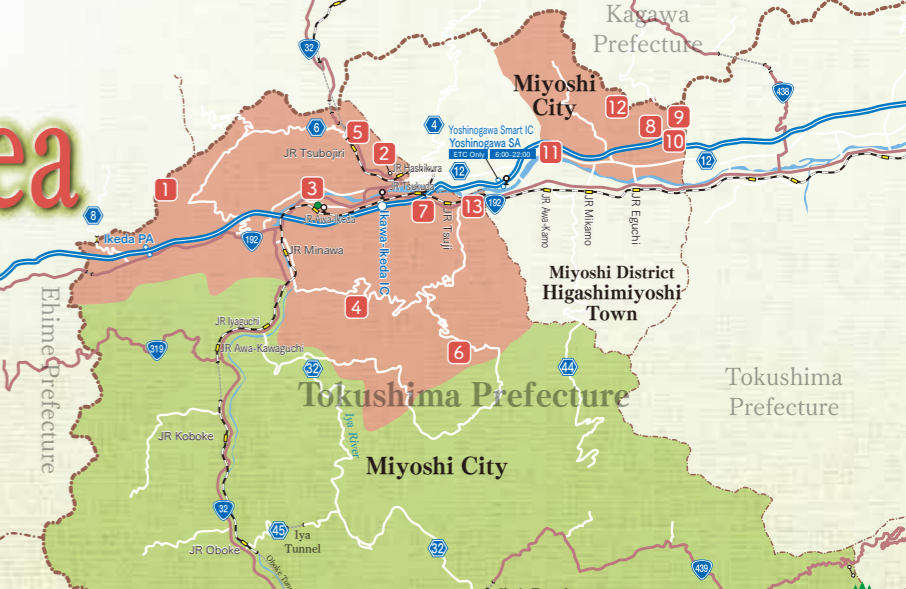
The eastern half of the Iya Valley, known locally as *Oku-Iya* (Deep Iya) has a long history of being a place to get away from it all. This truly off-the-beaten-path area was once the hiding place for fleeing Heike warriors centuries ago, and today it still holds on to a lifestyle and environment of old-time Japan. Home to historic villages of thatched roof farmhouses and surrounded by some of Shikoku's highest mountains, many surprises await those who make the effort to explore this back-country wonderland.



Northern Area Culture Area

Feel enriched through history and culture

Long known as the cross-roads of Shikoku, the northern area of Miyoshi City offers a collection of historical sights, local heritage, and natural glory. Bisected by the Yoshino River, here one can visit ancient mountaintop temples that offer contemplative appreciation, or stroll along quiet streets lined with traditional architecture that herald days of yore. Nature lovers will also welcome the variety of waterfalls, verdant parks, and scenic landscapes in this all-encompassing area.



14 Mt. Tsurugi

Noted as one of Japan's 100 Famous Mountains and standing at 1,955m, Mt. Tsurugi is the highest mountain in the region and home to lush woodlands. With its name translating as "sword" and also referred to locally as *Ken-zan*, legend has it that the sword of the Heike child Emperor Antoku is buried somewhere within. Suitable for even novice hikers, climbing the mountain is not overly difficult, and one can also take a chairlift half-way up. Upon reaching the meadow-covered top, the grand view extends to the Seto Sea northwards, while starry nights and early morning *unkai* (sea of clouds) await those who opt to stay in one of the summit lodges.



Yellow waxbells



Shikoku geranium

Contact: Tsurugi-san Chairlift ☎0883-67-5277
Location: Minokoshi, Higashi-Iya, Miyoshi City
Entry fee for chairlift (one way): Adults 1,050 yen, Children 520 yen (round trip): Adults 1,900 yen, Children 900 yen
Operating time: Chairlift open mid April to end of Nov
mapG-5 497 401 602*66

15 Mt. Miune

Also referred to locally as *Sanrei*, Mt. Miune straddles Tokushima and Kochi Prefectures and is considered one of the most beautiful mountains of Shikoku. Trails up the side lead through tranquil forests full of rare plant species, while near to its craggy 1,893m summit lies an idyllic pond. On top, the commanding view across the upper Iya Valley and beyond is both unparalleled and unforgettable.



Contact: Miyoshi City Tourist Information ☎0883-76-0877
Location: Sugeoi, Higashi-Iya, Miyoshi City
mapE-5 357 028 568*54

16 Oku-Iya Niju Kazurabashi (Double Vine Bridges)

Tucked away in a quiet glen at the deepest end of the Iya Valley lies two hidden treasures. The tranquil Oku-Iya Double Vine Bridges capture the imagination with their verdant forest setting and rustic charm. Considered "wife and husband bridges" due to one being "male" and the other "female", those who make the effort to seek out these secluded creations of twisted vine will certainly fall in love with them.



Contact: Miyoshi City Tourist Information ☎0883-76-0877
Location: 620 Sugeoi, Higashi-Iya, Miyoshi City
Operating time: Closed Dec 1 to March 31
Entry fee: Adults 550 yen, Children 350 yen
mapF-5 497 365 080*74

17 Kakashi-no-Sato (Scarecrow Village)

In the valley's final village of Nagoro dwells one of Japan's utmost oddities. Though home to only a handful of living residents, the hamlet is populated by hundreds of life-size dolls that "work" the fields, gather along the road, and even attend the school. It's easy to mistake them for real, and one is welcomed to wander among the "inhabitants".



Contact: Miyoshi City Tourist Information ☎0883-76-0877
Location: Nagoro, Higashi-Iya, Miyoshi City
mapF-5 497 362 349*36

18 Higashi-Iya History and Folklore Museum

This collection of antiques and heirlooms documents the rugged life of the Iya Valley inhabitants, dating back hundreds of years. It also features many artifacts from the fleeing Heike Clan, who hid in the valley after their defeat in the 12th century Genpei War.



Contact: ☎0883-88-2286
Location: 14-3 Kyoyo, Higashi-Iya, Miyoshi City
Entry Fee: Adults 410 yen, Middle School Students 210 yen, Children 100 yen
Opening hours: Thu-Tue 10:00-16:00. Closed on weekends and holidays from Dec to Feb.
mapD-5 357 109 691*66

19 Bukeyashiki Kita-ke (Samurai Residence)

Built over 250 years ago, this impressive thatched-roof house was home to the Kita Clan, which once presided over the Iya Valley. Architecture fans will enjoy the traditional construction. Nearby stands the enormous 800 year old



Contact: ☎0883-88-2040
Operating Time: 9:00-17:00, closed Dec 1 to March 31
Entry fee: Adults 310 yen, Children 100 yen
mapD-5 357 137 058*04

20 Chiiori Trust

The organization that maintains this 300 year old thatched-roof house is led by author and East Asia researcher Alex Kerr, who was attracted to the beauty and remoteness of the Iya Valley decades ago. It is open for tours with prior reservation, or for overnight lodging.



Contact: ☎0883-88-5290
Location: 209 Tsurui, Higashi-Iya, Miyoshi City
mapD-5 357 103 263*18

21 Ryugugake Cottage

Set in the lovely Ryugugake Park, this secluded assortment of fully equip rental cottages allows one to stay in a pleasant natural setting. Overlooking the Manpu Gorge, which one can also cross here via a soaring wire suspension foot-bridge, the area is noted for its stunning autumn leaves.



Contact: ☎080-2981-6221
Location: 438-3 Tsurui, Higashi Iya, Miyoshi City
Operating time: Closed Dec 1 to March 31
mapD-5 357 075 797*68



22 Ochiai Village

Nationally Important Preservation District for Groups of Traditional Buildings

Climbing 390m up the side of a mountain, the historic Ochiai Village is acclaimed for its collection of classic architecture, winding footpaths, rock walls, and terraced farm-plots, which all date back centuries. Still inhabited by the residents, wandering around this bucolic "living museum" allows one to get a feel for traditional Iya life. The Nagaoka-ke Historic House is open to the public, but if one wishes to stay the night, the eight beautifully restored thatched-roof rental homes of Togenkyo-Iya offer a once-in-a-lifetime experience. On the opposite side of the valley, the Ochiai Village Viewpoint allows one to take in the full grandeur of this picturesque hamlet.



Contact: Miyoshi City Tourist Information ☎0883-76-0877
Location: Ochiai, Higashi-Iya, Miyoshi City
mapE-4-E-5 357 172 526*60

1 Unpenji Temple

As number 66 in Shikoku's 88 Temple Pilgrimage, Unpenji Temple is also the highest of the set with its mountaintop perch of 910m. Founded in the year 789 by the esteemed monk Kobo Daishi, this peaceful temple is also referred to as *Shikoku Koya*, and can be accessed by local road or via pilgrim trails that lead through Ehime Prefecture.



Contact: ☎0883-74-0066
Location: 763 Norouchi, Hakuchi, Ikeda, Miyoshi City
mapB-2 207 717 724*14

2 Hashikuraji Temple

One of the main temples of the Shingon sect of Buddhism, Hashikuraji Temple is located up a mountain and accessed via ropeway. It is said that this splendid temple was founded in 828 when the monk Kobo Daishi traveled here, and through a vision he received at this site, he carved a statue honoring the spirit of the Konpira Temple, which is located just north of here in Kagawa Prefecture.



Contact: Hashikuraji Temple, Konpira Office ☎0883-72-0812
Location: 1006 Kuratani Shuzu, Ikeda, Miyoshi City
mapD-2 357 761 306*16



3 Awa-Ikeda Udatsu Streets Tobacco Museum

The town of Ikeda has a centuries-spanning history of once being a hub for the area's tobacco industry. The Tobacco Museum, with its *udatsu* architecture, offers a glimpse of the prosperity enjoyed by the old-world traders, as it is set in the stately home of a 19th century tobacco merchant.

Contact: ☎0883-72-3450
Location: 2465-1 Machi, Ikeda, Miyoshi City
Operating time: 9:00-17:00 (closed Wednesdays and during the New Year's period)
Entry fee: Adults 320 yen, university and high school students 210 yen, middle and elementary school students 100 yen
mapC-2 357 697 161*77

4 Kurozo Marshland

Covering an area of 27 hectares at an altitude of 600m, this otherworldly wetland is the habitat for a wide variety of rare plants, insects, and small animals. Each month, different species of flowers come into bloom, and the web of walking paths and shady resting spots makes this pristine retreat accessible to all.



Contact: Miyoshi City Tourist Information ☎0883-76-0877
Location: Kurozo, Shitsukawa, Ikeda, Miyoshi City
mapC-3 357 489 898*40

5 JR Dosan Line Tsubojiri Station

Located deep in the mountains near the border of Tokushima and Kagawa Prefectures, this tucked away train station is considered the most remote in Shikoku. Railway fans from across the country come to see this peculiar little depot and its unique switchback rail link.



Contact: JR Shikoku Awa-Ikeda Station ☎0883-72-0022
Location: Tatsutani, Nishiyama, Ikeda, Miyoshi City
mapC-2 357 789 064*6

6 Ikawa Ski Resort - Kainayama

With a panoramic view looking towards the Seto Sea, Shikoku's first ski area is continually supplied with fresh powder from its snow machines, giving optimal conditions. Five courses for various levels are on offer, and night skiing is available on Saturdays.



Contact: ☎0883-78-3003
Location: Hirayama, Iuchinishi, Ikawa, Miyoshi City
Operating time: Dec to March
mapD-3 357 466 164*30

Ikeda Townscape

The central part of Ikeda, once prosperous due to the bygone tobacco trade, is nice for strolling since much of the old town remains in its traditional form. Many of the historic houses here feature unique *udatsu* half-walls that extend off the second floor, and the neighborhood is also home to a long-standing sake brewery.

mapC-2 357 697 161*77

7 Sakuragaoka Park

This hilltop park is filled with over 1,100 cherry trees. Though the main blooming time is early spring, due to the large variety of subspecies here, blossoms can be enjoyed throughout the year. Pleasant views can be had here of the Yoshino River and surrounding countryside.



Contact: Miyoshi City Tourist Information ☎0883-76-0877
Location: 1395-1 Nishikawa, Ikawa, Miyoshi City
mapD-2 357 703 520*34

8 Takiji Temple

This venerable temple is said to have been established by the ancient monk Kobo Daishi in the years between 824 and 834. Revered inside is a large wooden Buddha statue dating from the ancient Heian Period and is nationally designated as an Important Cultural Asset.



Contact: ☎0883-77-2486
Location: 1796 Kamonomiya, Mino, Miyoshi City
mapE-2 228 193 559*6

9 Ryuzu-no-Taki/Kongo-no-Taki Waterfalls

It is said that the Ryuzu-no-Taki waterfall was a place of contemplation for the revered monk Kobo Daishi. About 300m away, the spectacular Kongo-no-Taki waterfall blasts from out of the rock face, splashing down over 40m below. The autumn leaves at these waterfalls are sure to delight.



Contact: Miyoshi City Tourist Information ☎0883-76-0877
Location: Kamonomiya, Mino, Miyoshi City
mapF-2 228 223 233*36

10 Momiji Onsen

This large hot spring bath house is adjacent to the Mino Noson Fureai Park. It is easy to spend your time in its open-air bath, which allows one to relax in the thermal water while enjoying the pleasant mountainside view.



Contact: ☎0883-77-2954 (for day use)
Location: 1467 Kamonomiya, Mino, Miyoshi City
Operating time: Closed Wednesdays
mapE-2 228 193 506*8

11 Roadside Station Mino

The wide view of the Yoshino River from this *Michi-no-Eki* system rest stop is lovely, especially when the sun sets across the water. A variety of fresh, locally grown produce is available here, as well as a souvenir shop and a cafe/restaurant.



Contact: ☎0883-76-2050
Location: 1909-1 Tachino, Mino, Miyoshi City
Closed: Mondays, 12/30-1/4
mapE-2 228 157 725*62

12 Kenko-to-Fureai -no-Mori Park

This hilltop park offers a fantastic view of the Yoshino River Valley and the Shikoku Mountain Range. A great place to bring the family, as it features an adventure castle, playground, and slides in a lovely woodland setting. Barbecue spots and bungalows are also available.



Contact: ☎0883-77-4320
Location: 1342-3 Shibo, Mino, Miyoshi City
Operating time: Open all year
mapE-2 228 191 618*3

13 Tsuji Townscape

Long ago, when boats were the main form of transport along the Yoshino River, Tsuji was a prominent river port town. As a commercial way-station for the 19th century tobacco trade, the prosperous residents built lovely homes, many of which still stand today.



Contact: Miyoshi City Tourist Information ☎0883-76-0877
Location: Tsuji, Ikawa, Miyoshi City
mapD-2 228 090 118*88

Accommodation Directory

Where to stay if you are in Miyoshi!

A wide range of accommodations are available to suit the desires of every visitor, including campgrounds, family-run guesthouses, traditional inns, thatched roof farmhouses, and relaxing hot spring hotels.

Oboke / Iya Area

MAP

1 Hotel Iya Onsen	☎0883-75-2311	Matsumoto, Matsuo, Ikeda	C-4
2 Haretoke Design Hostel	☎0883-75-2208	Ori, Ikeda	C-3
3 Hotel SunRiver Oboke	☎0883-84-2111	Nishiu, Yamashiro	B-4
4 Hotel Oboke-kyo Mannaka	☎0883-84-1216	Nishiu, Yamashiro	B-5
5 Guesthouse Boke Nouen	☎090-1578-1611	Kamimyo, Yamashiro	B-5
6 Smonkey	☎0883-84-1087	Simomyo, Yamashiro	B-5
7 Gakko-no-yado Aruse	☎0883-84-1337	Aruse, Nishi-Iya	C-5
8 Hotel Hikyo-no-Yu	☎0883-87-2300	Oinouchi, Nishi-Iya	C-4
9 YOKI Café & Guesthouse	☎0883-86-2334	Ichu, Nishi-Iya	C-4
10 Hotel Kazurabashi	☎0883-87-2171	Zentouku, Nishi-Iya	C-5
11 Iya Bijin	☎0883-87-2009	Zentouku, Nishi-Iya	C-5
12 Kazuraya	☎0883-87-2831	Kanjo, Nishi-Iya	D-5
13 Iya Kanko Ryokan	☎0883-87-2125	Zentouku, Nishi-Iya	C-5
14 Minshuku Minami	☎0883-87-2342	Zentouku, Nishi-Iya	C-5
15 Minshuku Iya-so	☎0883-87-2242	Zentouku, Nishi-Iya	C-5
16 Minshuku Oyama-so	☎0883-87-2133	Kanjo, Nishi-Iya	D-5
17 Ku-Nel-Asob	☎080-6282-3612	Enoki, Nishi-Iya	C-5
18 Tabibito-no-yado Nakone	☎0883-72-5557	Enoki, Nishi-Iya	C-5
19 Rental House FOREST	☎0883-87-2367	Shigesue, Nishi-Iya	C-5
20 Iya Fureai Park Campground	☎0883-76-8585	Oinouchi, Nishi-Iya	C-4
21 Kazurabashi Campground	☎090-1571-5258	Kanjo, Nishi-Iya	D-5
22 Glamping MATOBA	☎090-8998-1447	Imakubo, Nishi-Iya	C-5
23 Kenmi Onsen	☎0883-86-2982	Kurokawa, Yamashiro	B-3
24 Guesthouse Kanmanyō	☎090-9556-4788	Suesada, Yamashiro	B-3
25 Backpackers	☎0883-86-3033	Shirokawa, Yamashiro	B-4
26 Nenrinan	☎0883-84-1629	Kamimyo, Yamashiro	B-4
27 Oboke-Akanoya	☎090-2789-1252	Kamimyo, Yamashiro	C-5
28 Tenku-no-yado	☎090-8973-2328	Kamimyo, Yamashiro	B-4
29 Guest House COSMOS	☎080-6226-8206	Kamimyo, Yamashiro	B-5
30 Guesthouse Osakanakunti	☎0883-86-2086	Otsuki, Yamashiro	B-3
31 Momonga Village	☎0883-86-2334	Nobumasa, Yamashiro	B-3
32 Torinosu Mamaan	☎0883-86-2650	Oono, Yamashiro	B-3
33 YAMAYA	☎0883-86-1898	Okawamochi, Yamashiro	B-3
34 Shiozuka Highland Caground	☎0883-86-3077	Tairano, Yamashiro	A-4
35 Retreat space FUJIWARA	☎090-4788-0313	Nakano, Yamashiro	B-4
36 Guesthouse Kazurabashi	☎0883-87-7530	Zentoku, Nishi-Iya	C-5

Oku-Iya Area

MAP

37 Maruishi Parkland	☎0883-88-2768	Sugeoi, Higashi-Iya	F-5
38 Hotel Okuiya	☎0883-88-2045	Kyojo, Higashi-Iya	D-5
39 Heike-so	☎0883-88-2848	Kyojo, Higashi-Iya	D-5
40 Yoshida Ryokan	☎0883-88-2843	Kyojo, Higashi-Iya	D-5
41 Kajiya Iya Romantei	☎090-5144-9277	Kyojo, Higashi-Iya	D-5

Oku-Iya Area

MAP

42 Minshuku Iya Hakkei	☎0883-88-2358	Nakaue, Higashi-Iya	E-5
43 Kouya	☎080-6378-8984	Kubo, Higashi-Iya	E-5
44 Minshuku Matsuura	☎0883-67-5009	Minokoshi, Higashi-Iya	G-5
45 Minshuku Heike-no-Yado	☎0883-67-5296	Minokoshi, Higashi-Iya	G-5
46 Unkai-so	☎088-622-0633	Top of Mt. Tsurugi, Higashi-Iya	G-5
47 Tsurugi-san Chojo Hutte	☎080-2997-8482	Top of Mt. Tsurugi, Higashi-Iya	G-5
48 Tsurugi-Jinjya Minshuku	☎0883-67-5017	Minokoshi, Higashi-Iya	G-5
49 Tougenkyo-Iya	☎0883-88-2540	Ochiai, Higashi-Iya	E-4.5
50 Minshuku Umemoto	☎090-5271-4015	Ochiai, Higashi-Iya	E-4
51 Ryugugake Cottage	☎080-2981-6221	Tsurui, Higashi-Iya	D-5
52 Chiiori Trust	☎0883-88-5290	Tsurui, Higashi-Iya	D-5
53 Oku-Iya Niju Kazurabashi Campground	☎0883-88-2640	Sugeoi, Higashi-Iya	F-5
54 Tsurugi-san Enpuku-ji	☎0883-67-5276	Sugeoi, Higashi-Iya	G-5

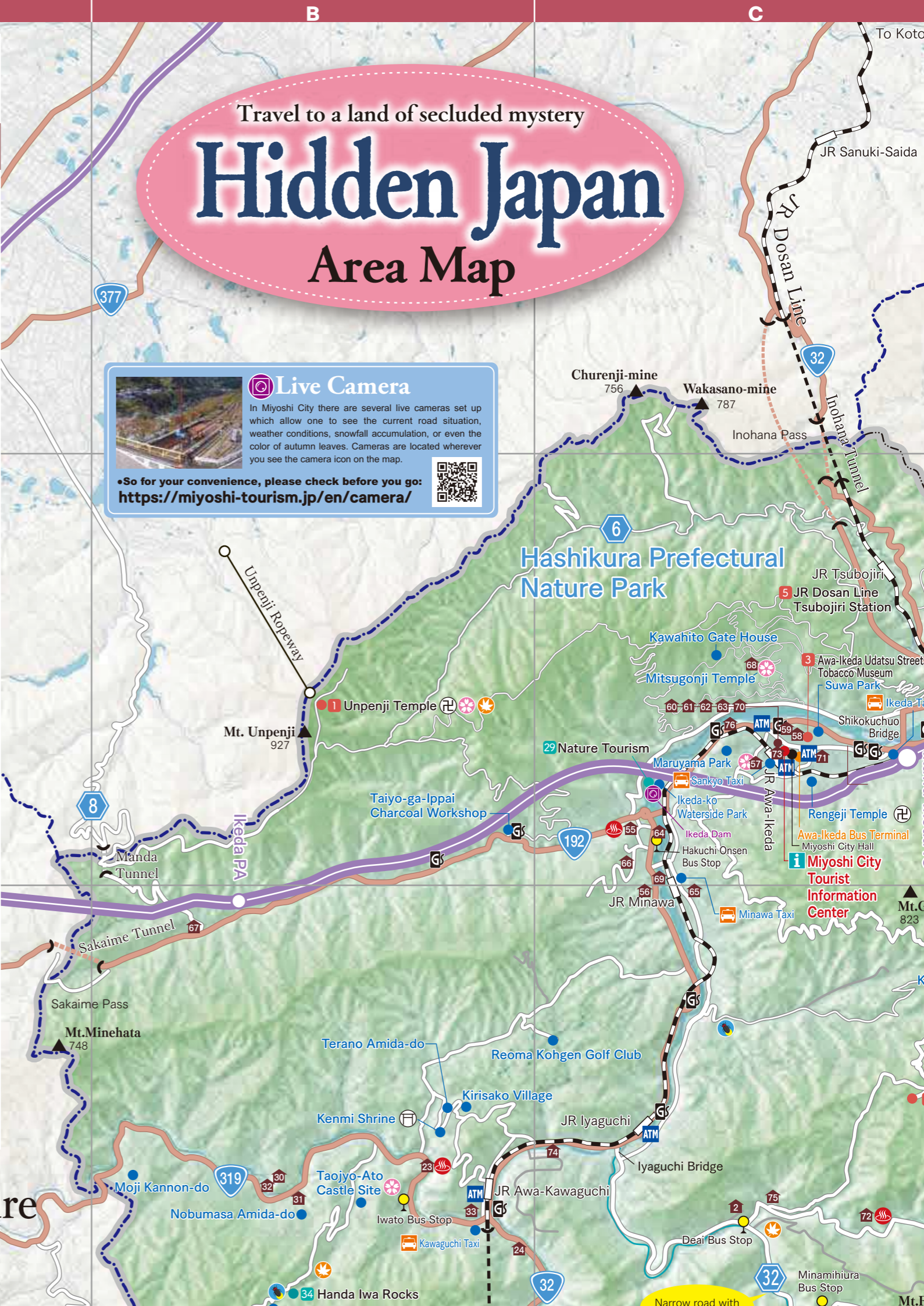
Northern Area

MAP

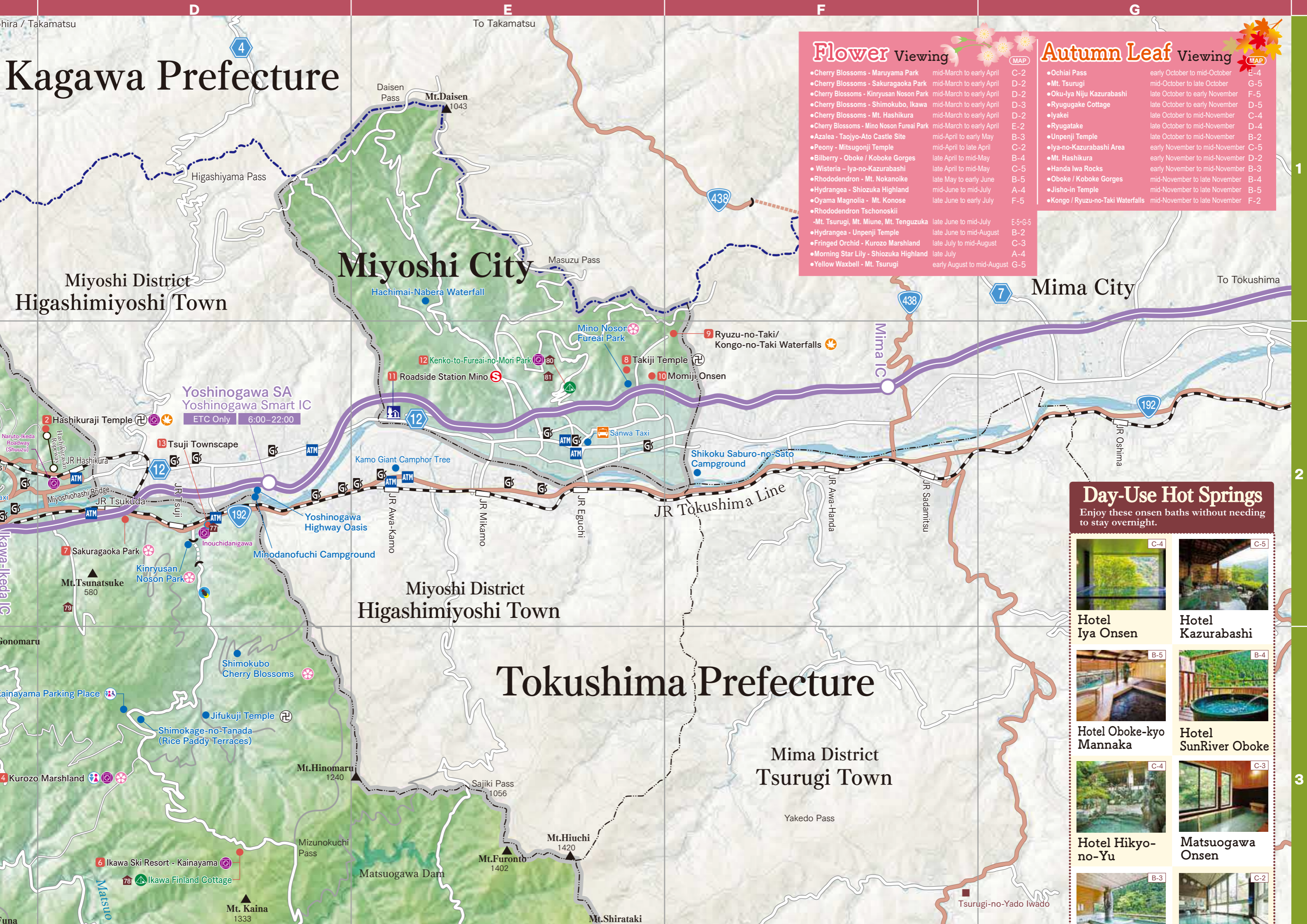
55 Awanosho	☎0120-018-081	Hakuchi, Ikeda	C-2
56 Guesthouse Wataridori	☎080-4972-1193	Hakuchi, Ikeda	C-3
57 heso camp	☎0883-70-0166	Ikemami, Ikeda	C-2
58 4S STAY Ikedaonsenyoko	☎0883-70-0166	Machi, Ikeda	C-2
59 4S Stay Honchodori	☎0883-70-0166	Machi, Ikeda	C-2
60 Business Hotel Yamashiro	☎0883-72-0277	Machi, Ikeda	C-2
61 Fukuya Ryokan	☎0883-72-0868	Machi, Ikeda	C-2
62 Sushiroku Ryokan	☎0883-72-7422	Machi, Ikeda	C-2
63 Marufuku Ryokan	☎0883-72-0027	Machi, Ikeda	C-2
64 Hakuchi Onsen Konishi Ryokan	☎0883-74-0311	Hakuchi, Ikeda	C-2
65 Kawakami	☎0883-74-0829	Nakanishi, Ikeda	C-3
66 Hakuchi-so	☎0883-74-0487	Hakuchi, Ikeda	C-2
67 Minshuku Okada	☎0883-74-1001	Sano, Ikeda	B-3
68 Awa Ikeda Youth Hostel	☎0883-72-5277	Nishiyama, Ikeda	C-2
69 Minshuku Tabibito-Yado	☎0883-76-4727	Hakuchi, Ikeda	C-2
70 4S Stay Ekimae	☎0883-70-0166	Sarada, Ikeda	C-2
71 COCO-CROSS Hostel	☎0883-72-0011	Sarada, Ikeda	C-2
72 Matsuogawa Onsen	☎0883-75-2322	Kurogawa, Matsuo, Ikeda	C-3
73 Hotel Eleven	☎0883-72-8115	Sarada, Ikeda	C-2
74 Yamaya base	☎0883-86-1898	Takiyasu, Kawasaki, Ikeda	C-3
75 Riverside D-Ai	Book on Airbnb Ori, Ikeda		C-3
76 Business Hotel Awaikeda Eleven2	☎0883-72-1010	Ueno, Ikeda	C-2
77 Isamuro Ryokan	☎0883-78-2051	Tsuji, Ikawa	D-2
78 Ikawa Finland Cottage	☎0883-78-3003	Hirayama, Ikawa	D-3
79 Guesthouse UEDA	☎0883-78-2227	Nishikawa, Ikawa	D-2
80 Kenko-to-Fureai-no Mori Cottage	☎0883-77-4320	Shibou, Mino	E-2
81 Nashikubo-no-le	☎090-9775-2899	Tachinoyama, Mino	E-2

Ikawa-Ikeda IC (Awa-Ikeda)	→
•Mt. Tsurugi Climbing Trailhead About 2 hours by car
•Oku-Iya Niju Kazurabashi About 1 hour 50 minutes by car
•Iya-no-Kazurabashi (Vine Bridge) About 1 hour by car
•Iyakei / Peeing Boy Statue About 50 minutes by car
•Oboke Gorge & Koboke Gorge About 40 minutes by car
•Shiozuka Highland About 1 hour by car
•Kurozo Marshland About 40 minutes by car

Shikokuchuo City Ehime Prefecture



Kagawa Prefecture



Flower Viewing

●Cherry Blossoms - Maruyama Park	mid-March to early April	C-2
●Cherry Blossoms - Sakuragaoka Park	mid-March to early April	D-2
●Cherry Blossoms - Kinryusan Noson Park	mid-March to early April	D-2
●Cherry Blossoms - Shimokubo, Ikawa	mid-March to early April	D-3
●Cherry Blossoms - Mt. Hashikura	mid-March to early April	D-2
●Cherry Blossoms - Mino Noson Fureai Park	mid-March to early April	E-2
●Azalea - Taoyjo-Ato Castle Site	mid-April to early May	B-3
●Peony - Mitsugonji Temple	mid-April to late April	C-2
●Bilberry - Oboke / Koboke Gorges	late April to mid-May	B-4
●Wisteria - Iya-no-Kazurabashi	late April to mid-May	C-5
●Rhododendron - Mt. Nokanoike	late May to early June	B-5
●Hydrangea - Shiozuka Highland	mid-June to mid-July	A-4
●Oyama Magnolia - Mt. Konose	late June to early July	F-5
●Rhododendron Tschonoskii		
●-Mt. Tsurugi, Mt. Miune, Mt. Tenguzuka	late June to mid-July	E-5/G-5
●Hydrangea - Unpenji Temple	late June to mid-August	B-2
●Fringed Orchid - Kurozo Marshland	late July to mid-August	C-3
●Morning Star Lily - Shiozuka Highland	late July	A-4
●Yellow Waxbell - Mt. Tsurugi	early August to mid-August	G-5

Autumn Leaf Viewing

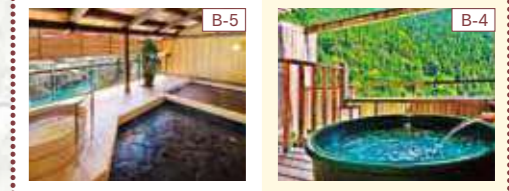
●Ochiai Pass	early October to mid-October	E-4
●Mt. Tsurugi	mid-October to late October	G-5
●Oku-Iya Niju Kazurabashi	late October to early November	F-5
●Ryugugake Cottage	late October to early November	D-5
●Iyakei	late October to mid-November	C-4
●Ryugatake	late October to mid-November	D-4
●Unpenji Temple	late October to mid-November	B-2
●Iya-no-Kazurabashi Area	early November to mid-November	C-5
●Mt. Hashikura	early November to mid-November	D-2
●Handa Iwa Rocks	early November to mid-November	B-3
●Oboke / Koboke Gorges	mid-November to late November	B-4
●Jisho-in Temple	mid-November to late November	B-5
●Kongo / Ryuzu-no-Taki Waterfalls	mid-November to late November	F-2

Day-Use Hot Springs

Enjoy these onsen baths without needing to stay overnight.



Hotel Iya Onsen Hotel Kazurabashi



Hotel Oboke-kyo Mannaka Hotel SunRiver Oboke



Hotel Hikyo-no-Yu Matsuogawa Onsen



Hotel Hikyo-no-Yu Matsuogawa Onsen


Ikawa Ski Resort - Kainayama About 1hour by car
 Kenko-to-Fureai-no-Mori Park About 45 minutes by car

Taxi	
Ikeda	
Sankyo Taxi	TEL.0883-72-3300
Minawa Taxi	TEL.0883-74-0057
Ikeda DK Taxi	TEL.0883-72-3740
Sudachi Taxi	TEL.0883-72-2120
Yamashiro	
Oboke Taxi	TEL.0883-84-1225
Kawaguchi Taxi	TEL.0883-86-1221
Nishi-Iya	
Iyakei Taxi	TEL.0883-87-2017
Kazurabashi Taxi	TEL.0883-87-2013
Higashi-Iya	
Miune Taxi	TEL.0883-88-2420

Bus	
Ikawa	
Shikoku Kotsu Bus	TEL.0883-72-2171
Ikeda	
Ikeda Kanko Bus	TEL.0883-72-4848
Awa-Ikeda Bus Terminal Information	TEL.0883-72-1231
Mino	
Mino Kotsu Bus	TEL.0883-77-2345

Car Rental	
Ikeda	
Reiwa Car Rental	TEL.0883-76-0011
Yamashiro	
Oboke Car Rental	TEL.0883-84-1211

A convenient way to use car navigation!
Map Code Search List



MAPCODE
 Map Code is a numeric code given for specific locations. If you enter the Map Code into your car navigation system, it will easily set to the destination. *Map Code is limited to compatible models only.

Please be careful when driving mountain roads!

When going downhill, shift into low gear.

When going down long hills, it is easy for your car breaks to overheat from overuse. This may cause the breaks to be less effective or for the breaks to fail completely. Therefore, please use the "engine break" by shifting into a lower gear and letting the engine resistance help slow the car. By doing so you will not need to use the breaks as much, and it will help maintain cooler breaks.

Take notice of drivers behind you.

On the rural mountain roads there is often little traffic, so you may not notice when drivers approach behind you. Please be sure to check your mirror sometimes to know if other vehicles are present. Also, since you may be driving slowly due to being unfamiliar with the area, please allow other vehicles to pass when it is safely possible.

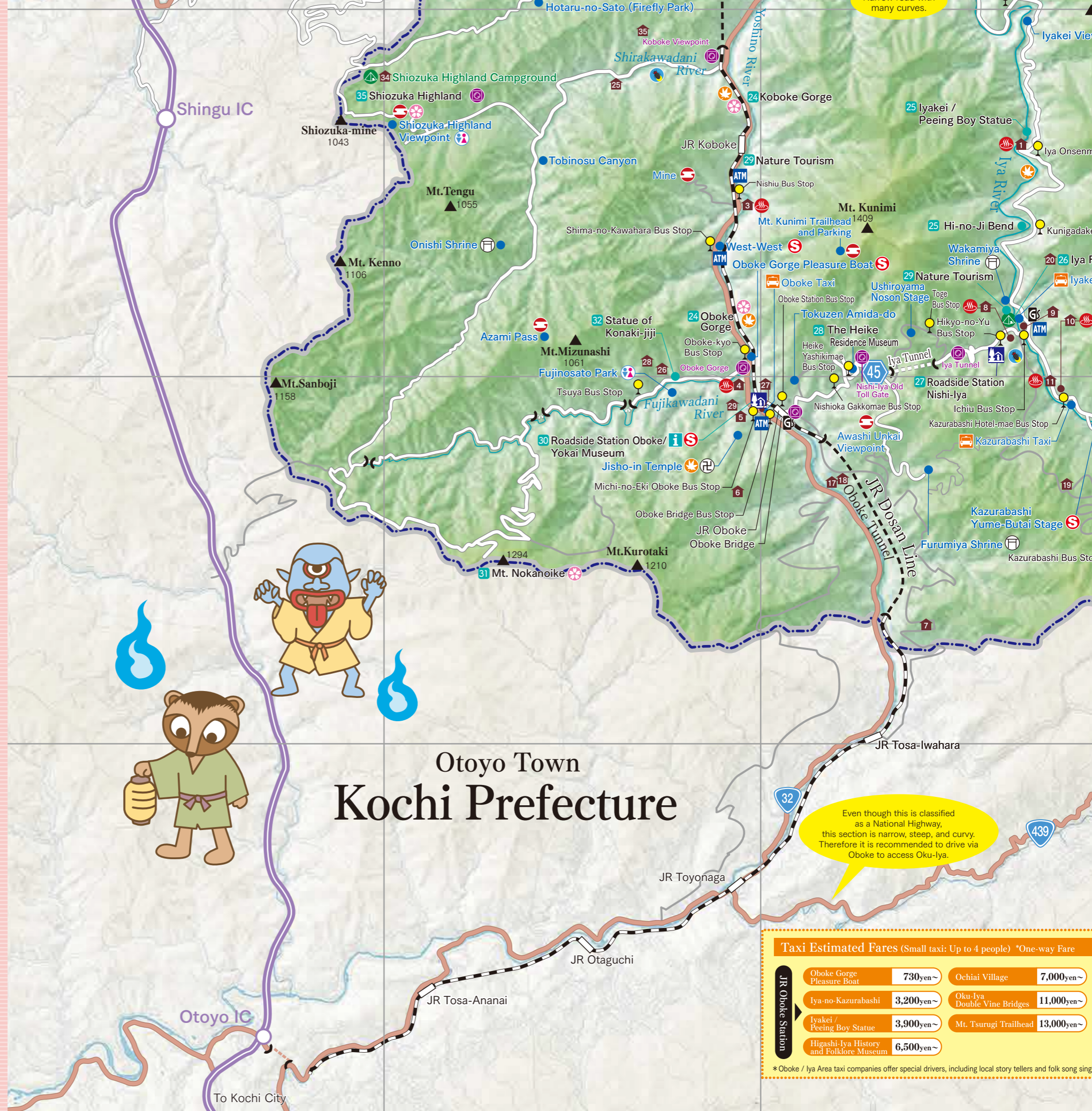
For current weather information in English:

Japan Meteorological Agency
<https://www.jma.go.jp/jma/index.html>

For current road conditions and traffic information:

Tokushima Prefecture Land Disaster Prevention Information
<https://bousai.pref.tokushima.lg.jp/>

Oboke / Iya Area	マップコード
Iya-no-Kazurabashi (Vine Bridge)	357 130 587 * 55
Kazurabashi Campground	357 161 188 * 71
Iya Fureai Park	357 188 480 * 36
Roadside Station Nishi-Iya	357 187 260 * 22
Kazurabashi Yume-Butai Stage	357 130 429 * 82
Heike Yashiki Museum	357 154 511 * 41
Furumiya Shrine	357 095 449 * 71
Iyakei / Peeing Boy Statue	357 308 375 * 47
Ryugatake	357 343 433 * 42
Oboke Gorge	357 151 826 * 18
Koboke Gorge	357 330 837 * 82
Oboke Gorge Pleasure Boat	357 151 856 * 71
Roadside Station Oboke / YOKAI Museum	357 151 315 * 35
Shiozuka Highland	207 352 780 * 36
Shiozuka Campground	207 352 780 * 44
Statue of Konaki-jiji	207 179 407 * 44
Tobinosu Canyon	207 296 696 * 44
Hotaru-no Sato (Firefly Park)	207 415 027 * 58
Handa Iwa Rocks	207 416 625 * 3
Oku-Iya Area	
Minokoshi / Mt. Tsurugi Climbing Trailhead	497 401 602 * 66
Oku-Iya Niju Kazurabashi (Double Vine Bridges)	357 130 556 * 14
Kakashi-no Sato (Scarecrow Village)	497 362 349 * 36
Bukeyashiki Kita-ke (Samurai Residence)	357 137 058 * 04
Kimura-ke Historic Farmhouse	357 104 458 * 88
Koune-ke Historic Farmhouse	357 117 776 * 88
Soba Dojo Noodle Shop	357 172 203 * 47
Ochiai Village	357 172 526 * 60
Ochiai Village Viewpoint	357 142 727 * 71
Higashi-Iya History and Folklore Museum	357 109 691 * 66
Tsuzuki Atelier (Soba Making Workshop)	357 077 599 * 14
Tougenkyo-Iya	357 105 224 * 60
Ryugake Cottage	357 075 797 * 68
Mt. Miune Climbing Trailhead	357 028 568 * 54
Northern Area	
Matsuogawa Onsen	357 428 564 * 22
Kurozo Marshland	357 489 898 * 40
Suwa Park	357 697 350 * 68
Miyoshi City Tourist Information Center	357 666 778 * 82
JR Dosan Line Tsubojiri Station	357 789 064 * 6
Awa-Ikeda Udatsu Streets / Tobacco Museum	357 697 161 * 77
Hashikuraji Temple	357 761 306 * 16
Unpenji Temple	207 717 724 * 14
Ikawa Ski Resort - Kainayama	357 466 164 * 30
Shimokage-no-Tanada (Rice Paddy Terraces)	357 554 579 * 74
Goraiko-no-Taki Waterfall	357 588 111 * 06
Sakuragaoka Park	357 703 520 * 41
Kinryusan Noson Park	228 060 714 * 34
Kongo-no-Taki Waterfall	228 223 322 * 28
Ryuzu-no-Taki Waterfall	228 223 233 * 36
Hachimai-Nabera Waterfall	228 247 516 * 41
Roadside Station Mino	228 157 725 * 62
Kenko-to-Fureai-no-Mori Park	228 191 618 * 3



Even though this is classified as a National Highway, this section is narrow, steep, and curvy. Therefore it is recommended to drive via Oboke to access Oku-Iya.

Taxi Estimated Fares (Small taxi: Up to 4 people) *One-way Fare

Oboke Gorge Pleasure Boat	730yen~	Ochiai Village	7,000yen~
Iya-no-Kazurabashi	3,200yen~	Oku-Iya Double Vine Bridges	11,000yen~
Iyakei / Peeing Boy Statue	3,900yen~	Mt. Tsurugi Trailhead	13,000yen~
Higashi-Iya History and Folklore Museum	6,500yen~		

* Oboke / Iya Area taxi companies offer special drivers, including local story tellers and folk song singer



Kenmi Onsen Awanosho Onsen
Miyoshi Hot Springs Natural Indulgence.

Even though this is classified as a National Highway, large buses can not pass.

Use caution when driving in winter.

Use caution when driving in winter.

Use caution when driving in winter.

The Shikoku-kotsu Bus from Ikeda ends here. To continue east toward Minokoshi please transfer here to the Miyoshi Municipal Bus.

Even though this is classified as a National Highway, this section is narrow, steep, and curvy. Therefore it is recommended to drive via Oboke to access National Highway Route 32.

Road closed from late December to March 31.

Map Key

- Toll Expressway
- National Highway
- Prefectural Road
- Main Local Road
- Local Road
- JR Train Line
- Prefectural Boundary
- Municipal Boundary
- Roadside Station (Michi-no-Eki)
- Public Restroom
- Hot Spring (Onsen)
- Campground
- Live Camera Point
- Bus Stop
- Gas Station
- ATM
- Autumn Leaf Viewing
- Flower Viewing
- Firefly Viewing
- Shrine
- Temple
- Unkai Viewpoint
- Accommodation
- Taxi Office
- Shop
- Information

Oboke / Iya Scheduled Sightseeing Bus

Reservations Required

Journey into this hidden region by bus while enjoying the gorgeous views along the winding, cliff-faced "Iya Highway".

Course

- JR Awa Ikeda Station** (boarding location) Departure 10:45 a.m.
- Awa Ikeda Bus Terminal** (boarding location) Departure 11:00 a.m.
- Heike Yashiki Museum** 11:40 a.m. ~ 0:05 p.m.
- Local Dish Lunch** (at Hotel Kazurabashi Iya-Bijin) 0:20 p.m. ~ 1:00 p.m.
- Iya Kazurabashi (Vine Bridge)** 1:05 p.m. ~ 1:50 p.m.
- Manneken Pis Statue / Iya Valley** (stop-off sightseeing) 2:10 p.m. ~ 2:25 p.m.
- Oboke Roadside Station** 3:00 p.m. ~ 3:20 p.m.
- Oboke Goage Sightseeing Boat Cruise** (drop-off point) 3:25 p.m. ~ 4:10 p.m.
- Nishiu** (drop-off point) Scheduled for arrival at 4:15 p.m.
- JR Awa Ikeda Station** (drop-off point) Scheduled for arrival at 4:45 p.m.
- Awa Ikeda Bus Terminal** (drop-off point) Scheduled for arrival at 4:50 p.m.

1612-27, Ikedacho Salad, Miyoshi-shi, Tokushima-ken

Shikoku Kotsu Awa Ikeda Bus Terminal

Reservations and Inquiry

e-mail yonkohstaff@gmail.com

Website <https://yonkoh.co.jp/teikan>

Tel 0883-72-1231 Reception Hours - 9:00 a.m. to 5:30 p.m.

* Shikoku Transportation and tour bus tickets are also sold nationwide at major travel agencies.

If you want to travel at your own pace, we recommend going by taxi!

- Iya-no-Kazurabashi**
- Oboke Gorge Pleasure Boat 3,600yen~
- Iyakei / Peeing Boy Statue 2,500yen~
- Oku-Iya Double Vine Bridges 8,000yen~
- Mt. Tsurugi Trailhead 10,000yen~

Recommended Flat-Rate Plans

Example 1
Oboko-Iya-no-Kazurabashi-Iyakei Course [Required time: 3 hours] Flat rate [per car] 14,700yen~
Small taxi holds up to 4 people

Example 2
Oku-Iya Course [Required time: 6 hours] Flat rate [per car] 29,400yen~
Small taxi holds up to 4 people

Taxi companies contact information
● Iyakei Taxi TEL.0883-87-2017 ● Oboke Taxi TEL.0883-84-1225 ● Kazurabashi Taxi TEL.0883-87-2013

Kochi Prefecture

Base map data was provided by the Geospatial Information Authority of Japan using digital map 200,000 (map image) based on 50m mesh (elevation), and was created by NAKAGAWA AD Co., Ltd.

